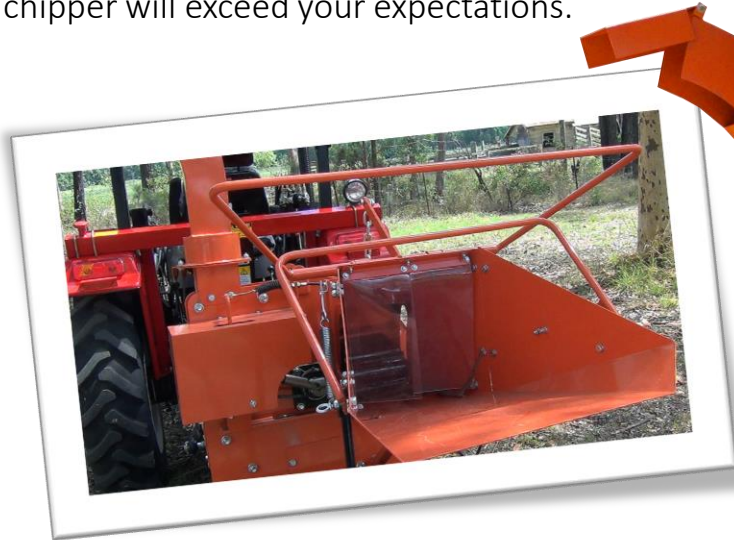


8in PTO Wood Chipper

The 8" PTO drive wood chipper with safer belt-driven feed system. This unit was designed to offer acreage owners an economical and well engineered wood chipper. This is a serious wood chipper, with a huge 8" chipping capacity. It was built to be the best valued wood chipper in its class. From the powder coated structure, to its ultra durable bearings and "V" belt drive system, this wood chipper will exceed your expectations.



Hitch	Cat 1, 3 Point Linkage
Tractor Power Required	40 - 75HP
Input Aperture	200mm (8 inch)
Flywheel	Heavy Duty
Chipping Capacity	6.5 - 8.9 M ³ / hour
Maximum Input (Green, Soft Wood)	Up to 150mm (6 inches)
Maximum Input (Dry, Hard Wood)	Up to 100mm (4 inches)
Side Discharge	Yes, Adjustable
PTO Shaft Included	Yes
PTO Input Speed	540 RPM
Unit Weight	410 Kg (Approx)
Safety Guards	Yes, Included

Some Assembly Required

Category #1 3 Point Linkage

PTO Shaft Included

Gearbox Oil Not Included

Your Price

\$

Inc. GST



- Chat to Normal, Friendly Folk
- 100% Australian Family Owned
- Factory Direct Products
- Readily Available Spare Parts
- Reliable After Sales Service

www.DiscountImplements.com

(02) 6553 6393

The Lakes Way, Rainbow Flat, NSW 2430

Discount Implements is a subsidiary of Discount Rural. Full specifications are available on our website. All prices are inclusive of GST. Warranty is strictly back-to-base. For full terms and conditions for the warranty, please visit our warranty page. *Offers, inclusions and accessories are available only while stocks last and are subject to availability. Offers and/or included accessories may be withdrawn or changed without prior notice. Included bonuses may be changed for an alternative of lesser retail value at agents discretion. Package deal price(s) available only at designated marketing events or at dealers discretion. Prices and specifications correct at time of publication but are subject to change and/or correction without prior notice. Implements with gearboxes (ie. Connect to the tractor with a PTO shaft) do not contain oil when new - add gear oil before use. Some assembly is required. Gear oil not included. For our full Warranty Policy, please visit <https://www.discountimplements.com>