

Towable Backhoe Instruction Manual



Assembling and User Manual

--Towable Backhoe ATV UTV

Parameters:

Name: Towable Backhoe Excavator

Engine: 420cc

Fuel: Petrol

Hydraulic oil: ISO 46 or 68

Digging Depth: around 2 Meters

Weight	1000 lbs
Boom Swing Angle	140 degrees
Fuel consumption	0,5 gallon/hour
Digging depth	About 2000 mm
Output	About 2 cub.m/15 min
Dimensions	3220x1950x2100 mm

Assembling

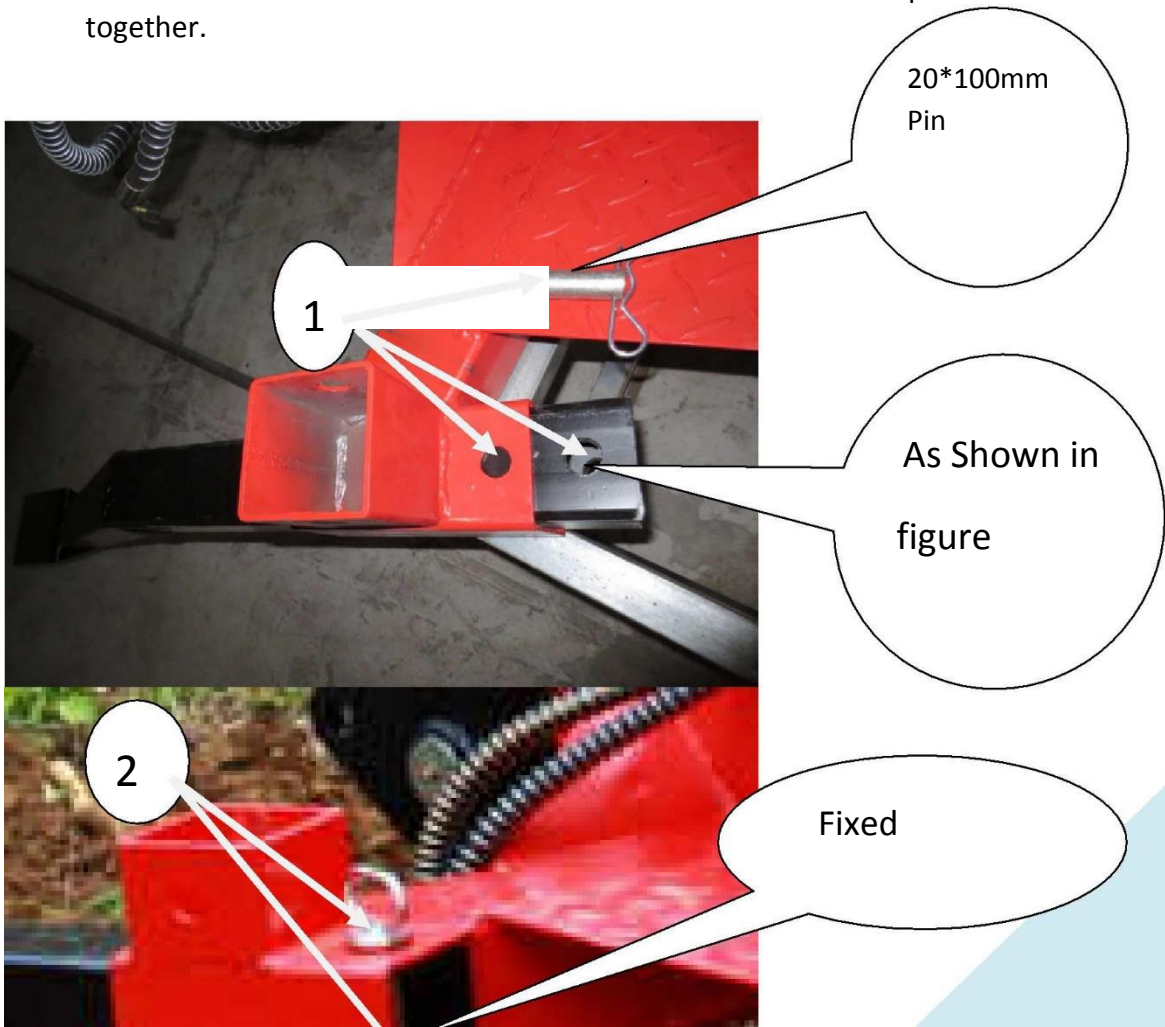
In the need of shipping safely, many parts this machine is disassembled before shipping. So you have to assemble several parts when you have received this machine.

Index

1、	Legs and wheels assembling-----	1~3
2、	Excavator Main Arm assembling-----	3
3、	Bucket Arm assembling-----	4
4、	Bucket assembling-----	4
5、	Hydraulic cylinder assembling-----	5
6、	Towing Ball assembling -----	6
7、	Fuel and Hydraulic oil filling-----	6
8、	Several different configuration -----	
9、	Maintenance-----	7
10、	Parts List and service-----	7~8
11、	Operations need to be avoid-----	

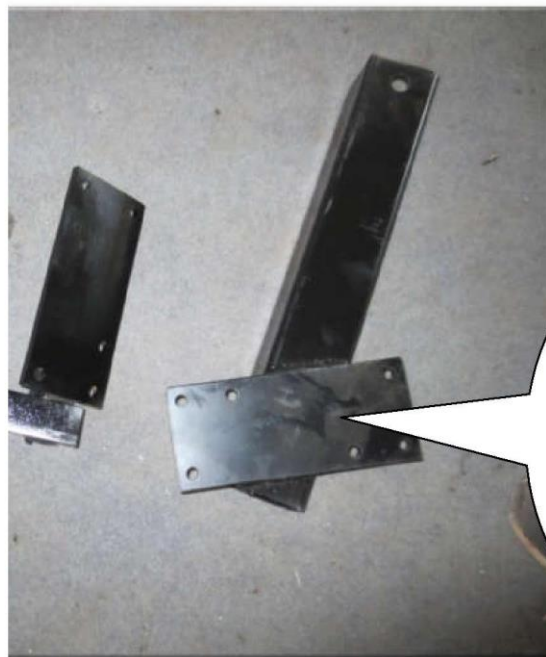
1、 Legs and wheels assembling:

Lift the body of the machine and insert the legs and the two wheels, after which the 20*100mm Pin could be used to fix the parts together.





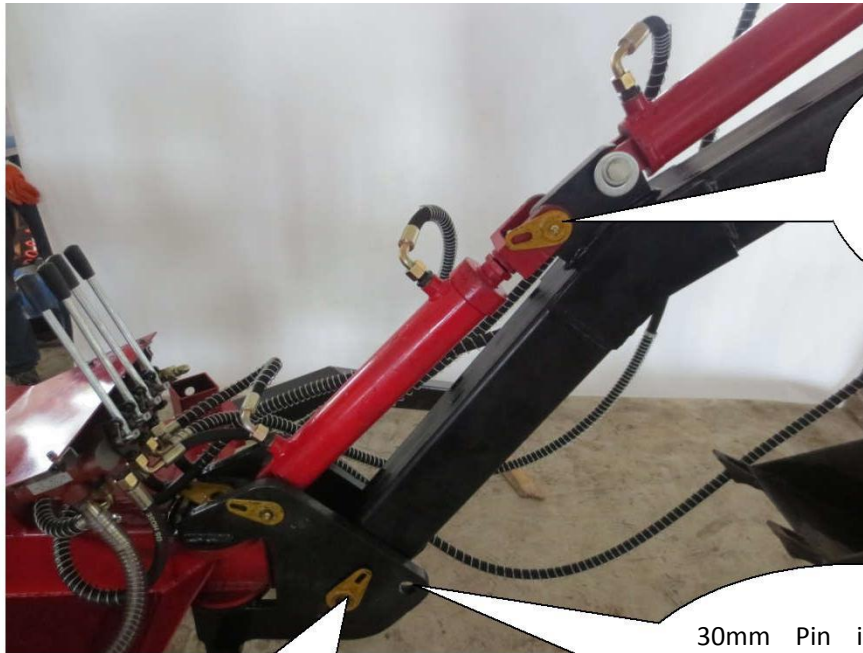
As Shown
in figure



Left and
Right
Wheels

2、 Excavator Main Arm assembling

Assemble the parts as shown below.



1)30mm Pin

1) 40mm Pin
2) m8*15 Screw

30mm Pin is has to be plugged in to avoid damage to machine when the backhoe is tracted..

3、 Bucket Arm assembling

Assemble the parts as shown below.

Use 30mm Pin 40mm Pin and M8*15 screw to set up the parts.

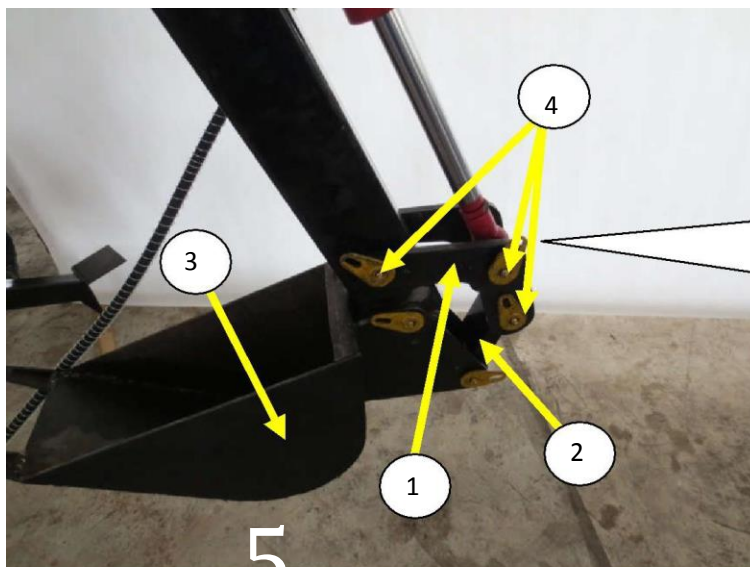


4、 Bucket assembling

Assemble the parts as shown below.

1) L size part 2) connector 3) Bucket 4) 30mm Pin
Steel ring

5) 30mm inside diameter

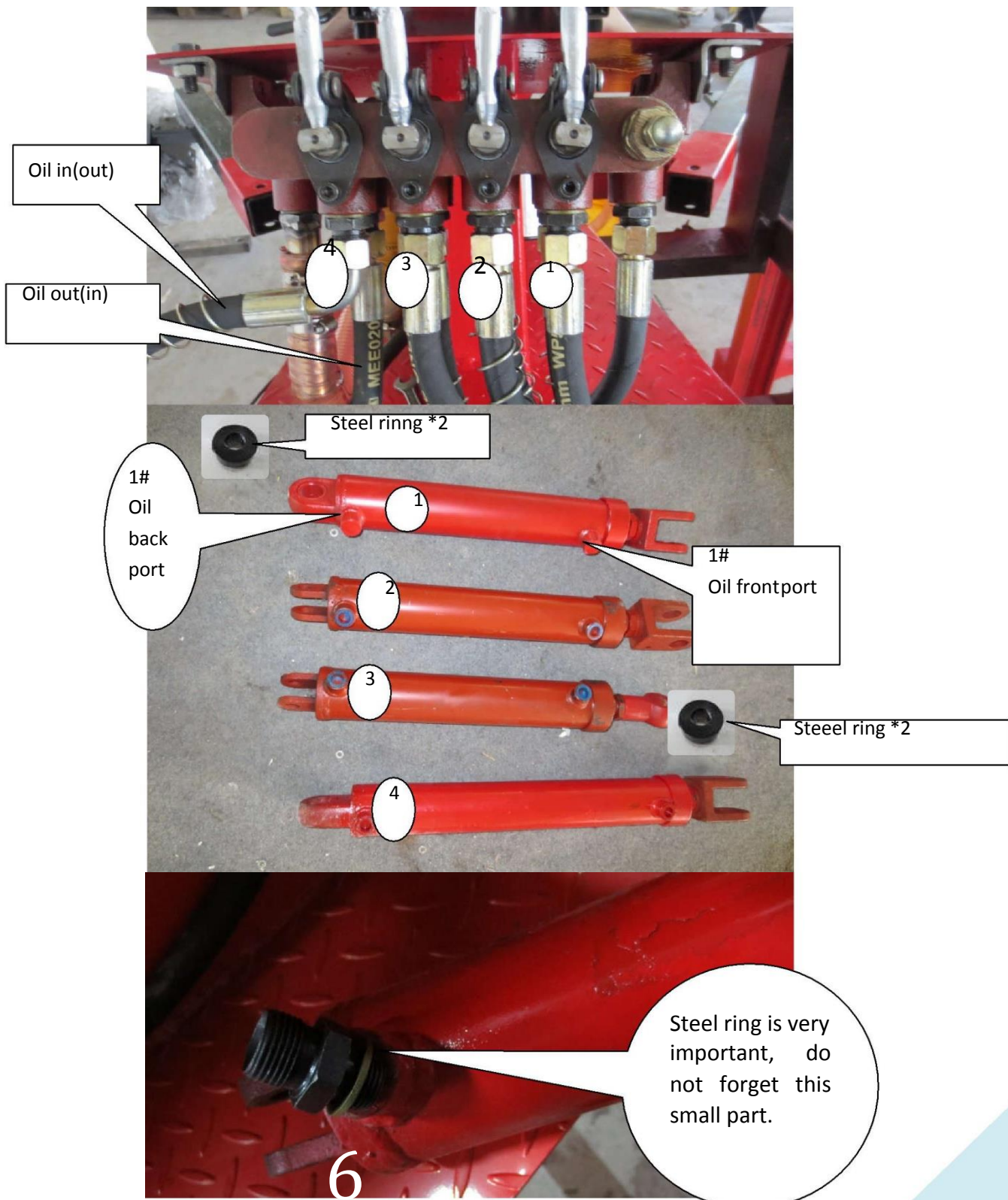


5) Steel ring (with 30mm inside diameter) is put here to keep the limit

5、 Hydraulic cylindder assembling

Assemble the parts as shown below.

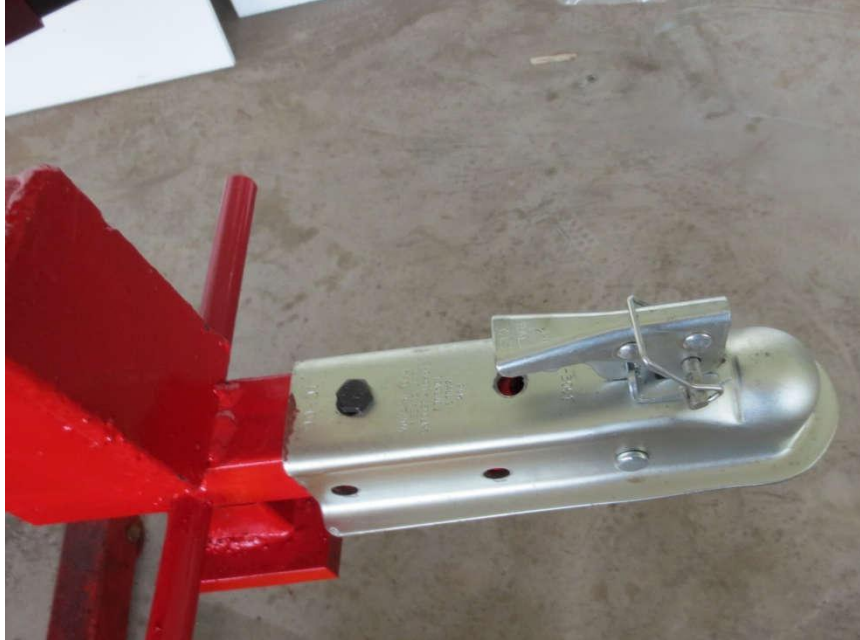
There are four pairs of Hydraulic pipe which is used to control four Hydraulic cylinders. One pair has to be connected to one Hydraulic cylinders, one pipe send in the oil the other floww away oil, its very easy to understand.



6、 **Towing Ball assembling**

Assemble the parts as shown below.

All parts need to be installed, so no problem will happen.



7、

Fuel and Hydraulic oil filling

There are two type of Seats for gasoline engine machine.

Air hole has to be opened when hydraulic oil is been filling. And close it when filling is done.



hydraulic oil entry

8、 Several different configuration



Diesel engine which is 60KG heavier than gasoline engine. The size of diesel engine is around 1.8 times of Gasoline engine.



Gasoline engine



This type of seat is available only on Gasoline engine machines. Diesel engine machine does not have this type of seats.

→ Diesel engine could have the configuration of start battery and electrical systems 80A/12V battery is been employed.



→ Two control stick with four control stick could be used, which could lead to higher efficiency when work with this backhoe.

9、 Notices and Maintenance

- 1、 Install the Bottom Hydraulic cylinder which is used to turn last, because this could help make the installing process easy.
- 2、 Install Hydraulic cylinder before install the parts of the main digging arm, otherwise without the help of hydraulic cylinder it is not easy to lift the parts of the main digging arm.