

3-Point Linkage Fertilizer Spreader

XA 150

XA 250

XA 300

XA 400

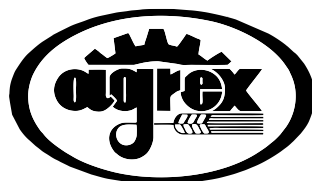
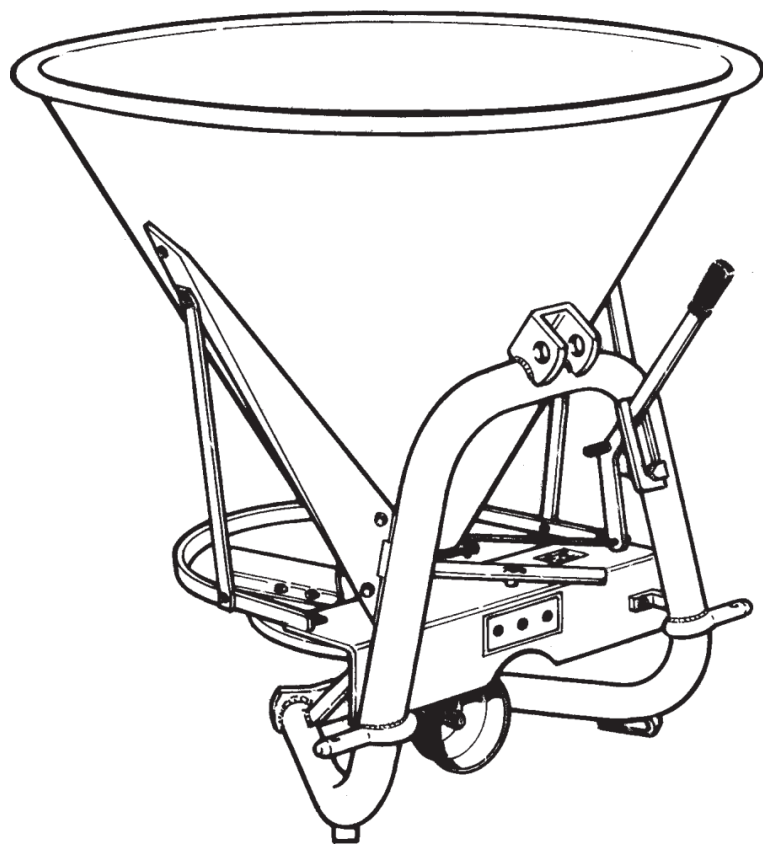
XA 500

XL 250

XL 300

XL 400

XL 500



User Manual

TECHNICAL DATA

MACHINE	Fertilizer spreader	
SERIES and MODELS	XA150	XL250
	XA250	XL300
	XA300	XL400
	XA400	XL500
	XA500	
POWERED BY	Tractor PTO Shaft	

MANUAL IDENTIFICATION

VERSION	3.0
UPDATE	17-11-2020



This part of the user's guide has to be filled in on delivery; it is advisable to mention the above indicated identification data whenever you contact your dealer

TABLE OF CONTENTS

Section	Page
1 FOREWORD_____	4
2 WARRANTY_____	4
3 CONFORMITY STATEMENT_____	4
4 IDENTIFICATION PLATE (Optional)_____	5
5 WARNING SIGNS_____	5
6 MACHINE DESCRIPTION_____	6
7 ACCIDENT PREVENTION STANDARDS_____	6
8 MACHINE USE_____	7
9 LOADING_____	8
10 DISTRIBUTION_____	8
11 BLADE ADJUSTMENT_____	8
12 SPREADING PATTERNS_____	8
13 ASSEMBLY_____	9
14 TRACTOR HITCHING_____	10
15 ACCESSORIES_____	11
16 MAINTENANCE_____	13
17 STORAGE_____	13
18 TRANSPORT_____	14
19 TECHNICAL DATA_____	14
20 DISPOSAL_____	14
21 SPREADING TABLES	
22 SPARE PARTS	
23 ASSEMBLY GUIDE	

1 FOREWORD

This guide is integral part of the machine and contains all necessary information for use and maintenance.

Before using or servicing the machine, operators and technical staff are required to read this guide carefully.

This guide, or a copy of it, must be kept in a convenient place for reference. It is advisable to contact the manufacturer for any further information.



Pay attention to this sign: it indicates dangerous operations.

2 WARRANTY

The warranty is valid for 12 months as from the purchase date. Improper use of the machine will lead to warranty expiry. The warranty does not apply in case the guide instructions are not observed, changes are carried out and non-original spare parts are used. The court of jurisdiction is Padua, Italy.

3 CONFORMITY STATEMENT

Assigned copy of the original statement is enclosed herewith and certifies that the machines have been manufactured in accordance to building and safety standards.

4 IDENTIFICATION PLATE (Optional)

The machine identification plate (where fitted) containing all relevant identity information is located on the guard. (Fig.1)

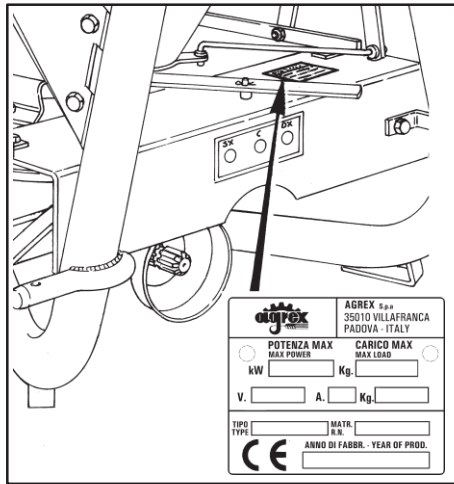


Fig. 1

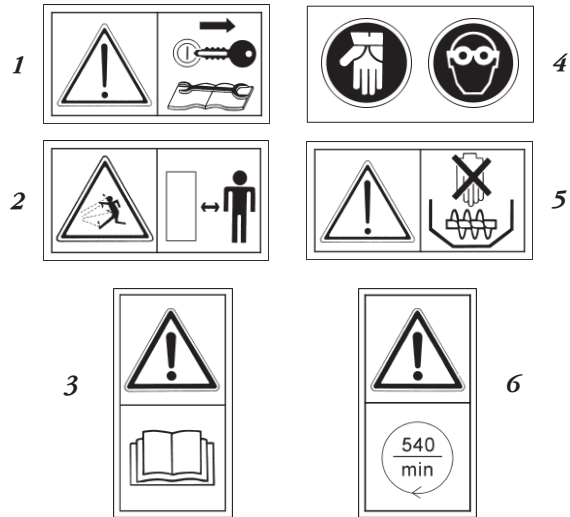


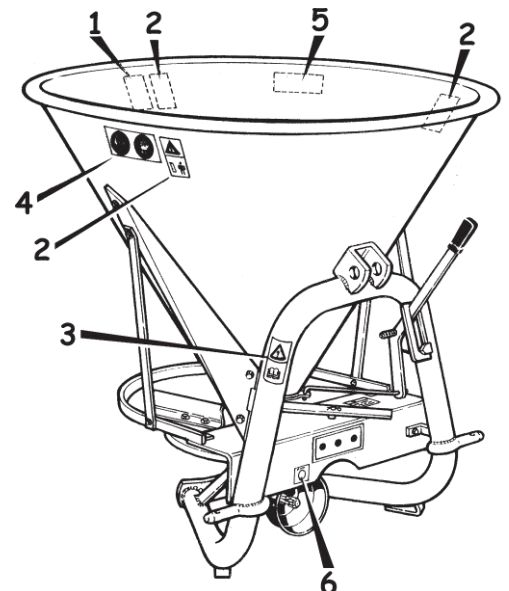
Fig. 2

5 WARNING SIGNS

The warning signs are affixed to the hopper, the frame and the guard as shown in the picture below.

SIGNS DESCRIPTION

- 1 - Warning! Before servicing the spreader, take out the ignition key and read this guide carefully.
- 2 - Warning! Keep out. Hazard of fertilizer particles being spread.
- 3 - Read the user's guide carefully.
- 4 - Always wear safety gloves and glasses.
- 5- Warning! Never put hands into rotating parts in movement.
- 6 - Revolutions per minute



It is advisable to keep the warning signs clean and make sure they are always legible; if necessary, request them from the manufacturer and replace with original warning signs.

6 MACHINE DESCRIPTION

This centrifugal spreader is suitable for spreading granular, dry or humid fertilizers and is designed to be hitched to tractors or self-propelled machines. The fertilizer is spread by means of a rotating disc equipped with 4 blades.

The machine consists of :

- 1 - spreading disc with blades**
- 2 - frame and protections**
- 3 - hopper**

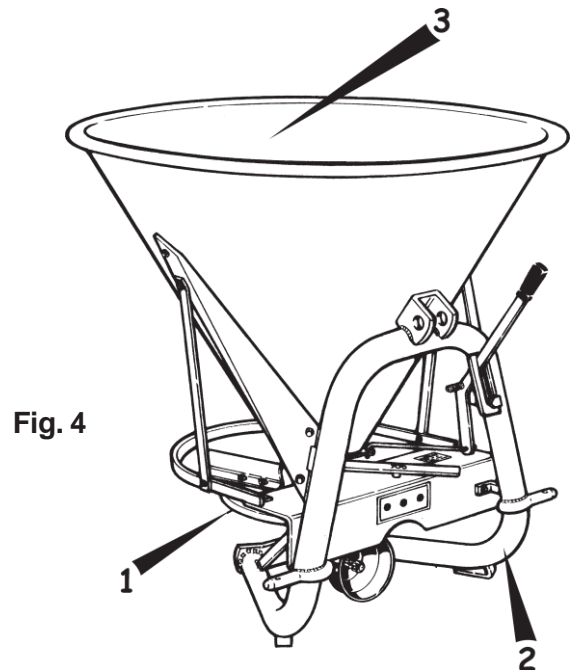


Fig. 4

7 ACCIDENT PREVENTION STANDARDS

HOW TO AVOID ACCIDENTS



In order to avoid accidents, pay close attention to the warning signs affixed to the machine and read this guide carefully.

Make sure no bystanders (especially children) or animals are in the working area.

Wear close fitting and laced-up clothing, safety shoes, safety gloves, mask and glasses especially while spreading powder fertilizers and in windy weather conditions.



While driving the tractor, make sure the P.T.O shaft is disengaged.



When the spreader is not being used, turn the motor off, put the handbrake on, disengage the P.T.O. and lay the spreader down on the ground.



Never carry out any maintenance work with the spreader in operation or while the tractor is running.

Never carry out any maintenance work with the spreader connected to the 3-point-hitch of the tractor: the spreader may suddenly fall down.

Before connecting the P.T.O. shaft, make sure the revolution number is the same of that of the tractor.

Abide by the national traffic code when transporting the machine on public roads.

Do not carry anyone while the machine is operating or during transfers.

Noise level under 70dB.

A careful operator is the best insurance against accidents.

8 MACHINE USE

The machine can be hitched to any kind of tractors of suitable power.



We recommend to start the spreader only outdoors and in good visibility conditions.

IMPROPER USE

It is forbidden to use the spreader differently from what described and specified in the present guide.

It is forbidden to remove safety devices and chain guards.

It is forbidden to make changes to any part of the spreader.

It is forbidden to put hands, arms or any other part of the body inside the rotating parts.

Never load the hopper with wet products; the machine may get obstructed.

Never use the spreader to spread dangerous substances i.e. glass, pebbles or similar products as they may injure people or cause damages.

Disabled personnel are not allowed to use the spreader.

Minors are not allowed to use the spreader.

9 LOADING

Before loading the hopper, make sure the tractor is off and the P.T.O. shaft disconnected.



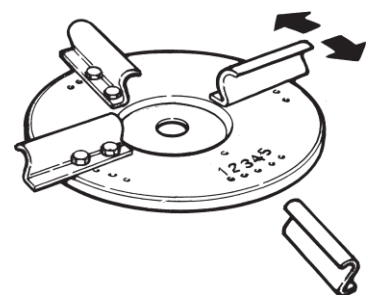
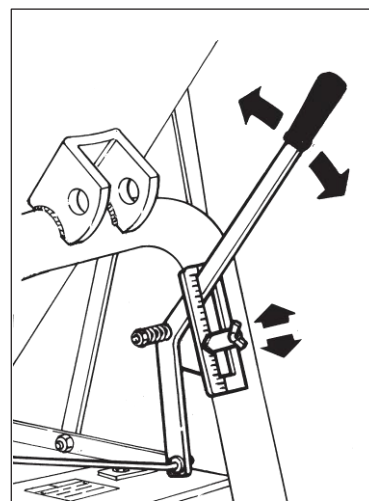
We recommend that the whole loading operation is carried out by the same operator. Lay down the spreader on the ground and then load the hopper.

10 DISTRIBUTION

By means of a lever positioned near the third point it is possible to increase or reduce the quantity of fertilizer to be spread. By pulling the lever down, the quantity is increased, by pulling the lever up the quantity is reduced till complete flow stop.

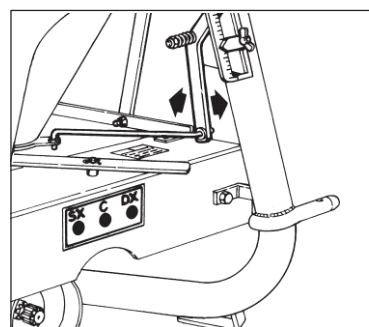
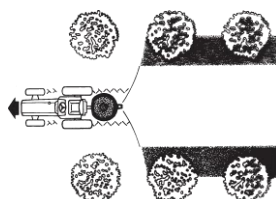
11 BLADE ADJUSTMENT

According to the different specific weights of the fertilizers to be spread, so as to get spreading uniformity to the right as well as to the left, the blades can be fixed on the spreading disc into 5 different positions marked by the stops 1-2-3-4-5. The blades are usually fixed into the stop nr.3. By fixing the blade towards the stop nr.1, the spreading is increased to the left. By fixing the blade towards the stop nr.5, the spreading is increased to the right.



12 SPREADING PATTERNS

By simply changing the position of the lower lever, it is possible to spread exclusively to the right or to the left of the tractor driver. The lever has 3 holes: a uniform full-width spreading pattern is obtained by fixing the lever into the central hole, and a localized spreading pattern (to the left as well as to the right) is obtained by fixing the lever into the other two holes.



13 ASSEMBLY



Operators are required to be extremely careful during assembly.

The assembly must be carried out following the instructions of the user's guide. **The accident prevention standards must be observed: always use suitable tools.**

1- Fix the gear-box (1) to the frame (T).

2- Mount the spreading disc (2) on the drive shaft of the gear box (1) and fix with a pin.

3 - Fix the guard (3) to the frame (T).

4- Fix the two side supports (4) to the frame.

5- Insert the circlip, the washer and the dosing discs in the drive shaft of the gear box (see 5).

6- Fix the hopper (6) to the side supports (4) and to the frame.

7- Intsert the agitator bush guide (7) in the discharging hole.

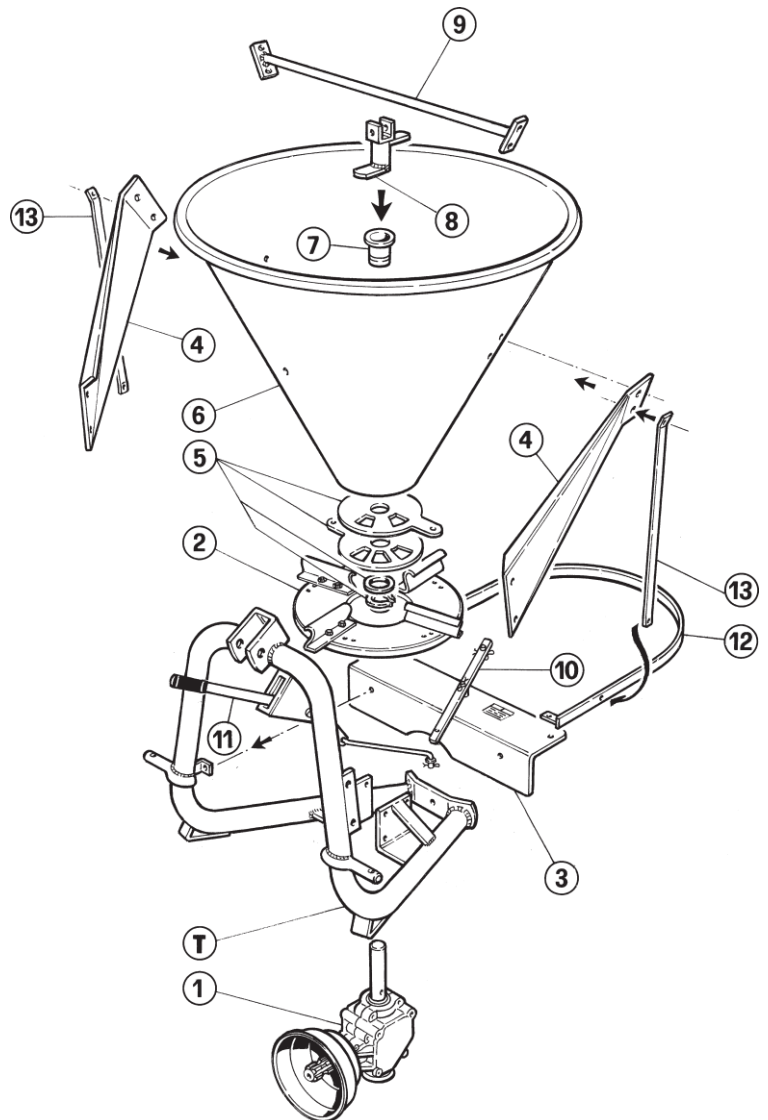
8- Fix the agitator (8) to the drive shaft of the gear box.

9- Mount the hopper reinforcement bar (9) and fix it together with the side supports (4) and the supporting bars (13) by means of screws.

10- Mount the selector rod and connect it to the 3-hole dosing disc.

11 - Mount the adjustment lever (11) and connect the flow adjustment bars to the 2-hole dosing disc.

12- Mount the roll-over protection device on the guard and fix it to the two supporting-bars with screws.



14 HITCHING



Before hitching the spreader to the tractor, turn the motor off, disengage the P.T.O. and put the handbrake on.

Insert the lower bars of the tractor-lifter into the inside or outside lower coupling pins of the spreader, according to the pinhole diameter, and secure with split pins. Connect the third point with a split pin and piston pin.

Connect the P.T.O. shaft, making sure the safety lock has gone off.

To secure the stability of the spreader, fasten the lower bars of the 3-point-hitch to the tie-rods. (Fig.9)

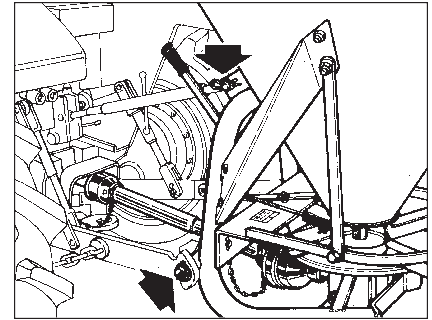


Fig.9

Adjust the length of the third point so that the spreader, while operating (70-80 cm from the ground), is perfectly level (fig.10).

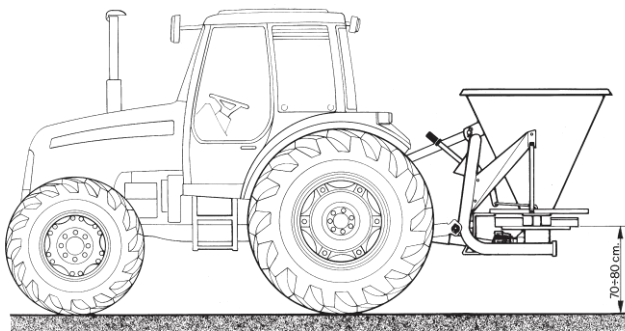


Fig.10

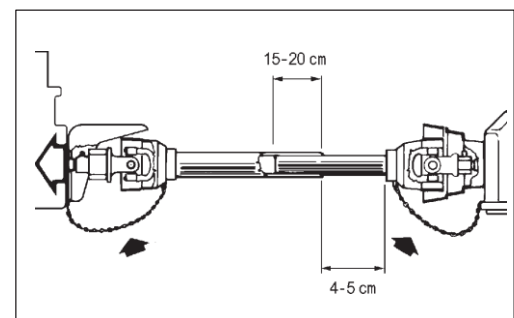


Fig.11

Make sure there is always a distance of at least 4-5 cm between the outer cardan tube and the joint spiders when the P.T.O. shaft is in its closing position; when the P.T.O. shaft is at its maximum extension, the two inner tubes must overlap for at least 15-20 cm (read the attached P.T.O. shaft guide carefully).

15 ACCESSORIES

The fertilizer-spreader can be equipped with the following accessories:

- Articulated agitator kit for powder fertilizers (Fig.12)
- Mechanic remote control (Fig.13)
- Deflector for salt/sand (Fig.14)
- Single fertilizer conveyor (Fig.15)
- Dual fertilizer conveyor (Fig.16)

ARTICULATED AGITATOR KIT FOR POWDER FERTILIZERS

This accessory together with the agitator permits the spreading of powder or damp fertilizers; its function is to keep the fertilizer flowing down into the discharging hole.

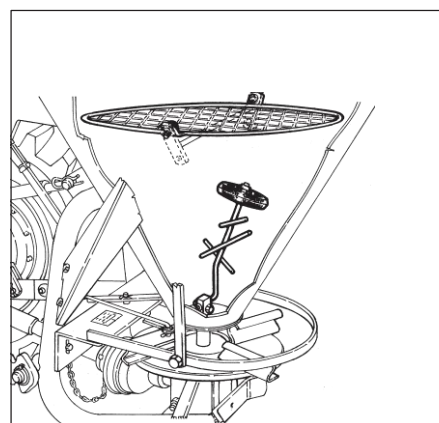


Fig.12

MECHANIC REMOTE CONTROL

Supplied on request. It consists of a 2.5 m extension containing a steel wire that, connected to the adjustment lever makes the adjustment possible from the tractor seat, so as to assure a safe and handy work.

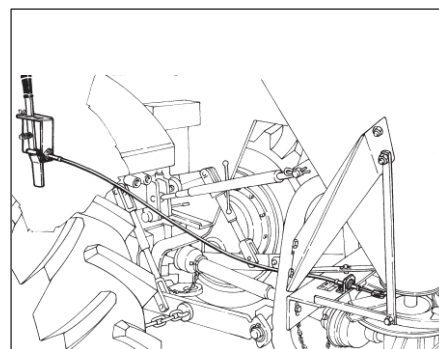


Fig.13

DEFLECTOR FOR SALT/SAND

It consists of a section of a steel cone and of two adjustable lateral supports; with this accessory the product is spread in the area right below the hopper.

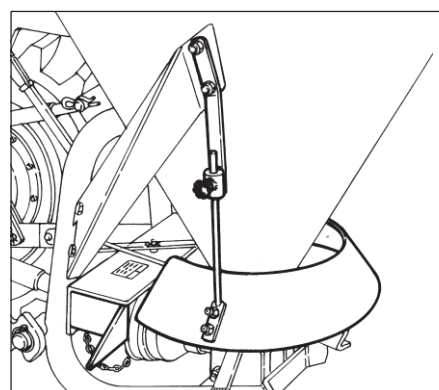


Fig.14

SINGLE FERTILIZER CONVEYOR

It consists of 2 steel hulls that cover the spreading disc and allows a precise and localized distribution.

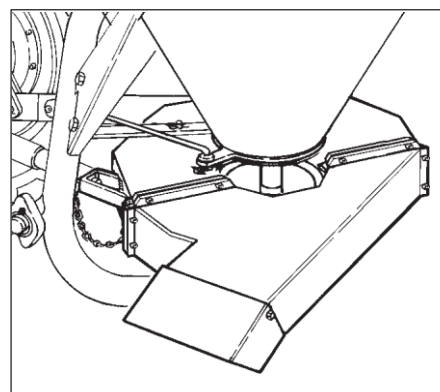


Fig.15

DUAL FERTILIZER CONVEYOR

It allows to throw the fertilizer on the right and on the left side of the machine.

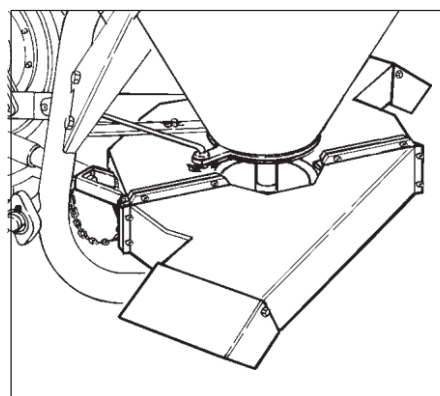


Fig.16

16 MAINTENANCE

Before any maintenance operation or replacing of spare parts, make sure the spreader is detached from the tractor or at least laid on the ground.

Always switch the tractor motor off, remove the ignition key and make sure the spreader is securely fixed. **It is forbidden to service the spreader while it is working or the tractor is on.**

Abide by the instructions of this user's guide.

Always clean the spreader before carrying out any maintenance work or servicing it. Always wear protective gloves and always use suitable tools.

STANDARD MAINTENANCE

Before using the spreader make sure that the hopper bottom is not obstructed.

After use, clean the hopper carefully and remove fertilizer residues. Before storing the spreader, it is advisable to unload the hopper completely so as to prevent product residues from obstructing the hopper or blocking the bottom shutter.

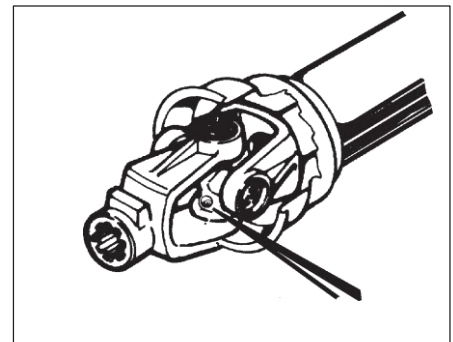
PROGRAMMED MAINTENANCE

Every 10 hours:

- grease the joint spiders of the drive-shaft

Every 50 hours:

- make sure all screws are firmly tightened



17 STORAGE

At the end of the season or before long periods of inactivity, it is necessary to:

- clean the spreader carefully
- check the worn-out or damaged parts and, if necessary, replace them
- make sure all bolts are firmly tightened

It is in the user's interest to find the spreader in good working condition at the beginning of a new season.

18 TRANSPORT

The machine is supplied disassembled, packed in cardboard and nylon. It is important to read this guide to mount it up correctly.

Respect the natural environment. Throw the carton boxes in the proper containers

19 TECHNICAL FEATURES

• MEASURES

MODEL	HEIGHT	WIDTH	LENGTH	CAPACITY	WEIGHT	MAX LOAD
XA 150	89 cm	90 cm	108 cm	150 l	45 kg	550 kg
XA 250	97 cm	100 cm	113 cm	200 l	46 kg	550 kg
XA 300	104 cm	108 cm	117 cm	250 l	49 kg	550 kg
XA 400	110 cm	114 cm	120 cm	300 l	52 kg	550 kg
XA 500	114 cm	119 cm	123 cm	350 l	54 kg	550 kg
XL 250	96 cm	105 cm	114 cm	200 l	45 kg	550 kg
XL 300	104 cm	113 cm	118 cm	250 l	46 kg	550 kg
XL 400	110 cm	120 cm	122 cm	300 l	48 kg	550 kg
XL 500	114 cm	123 cm	124 cm	350 l	50 kg	550 kg

• TECHNICAL DATA (All versions)

Powered by Tractor P.T.O. shaft at 540 RPM

Required power 6 kW

20 MACHINE DISPOSAL

At the end of its working life, the spreader must be demolished. Its various components must be sorted out and accordingly disposed of. For a correct disposal, abide by the regulations in force in the user's land.

21 SPREADING TABLE

Fertilizer type	PTO	Spreading width (m)	km/h	kg/ha of fertilizer to be spread at the speed indicated in column km/h											
				OPENING											
				1,5	2	2,5	3	3,5	4	4,5	5	5,5	6	6,5	7
Coarse grained fertilizers	540	18	1,5	225	375	691	1139	1455	1795	2175	2628	2890	3250	3560	4005
			4	106	156	277	465	580	720	887	1050	1155	1305	1450	1628
			8	58	78	145	230	292	360	441	530	586	675	742	835
			12	39	60	96	156	197	245	292	363	385	450	485	552
			16	23	39	72	120	150	192	225	270	290	335	369	420
Medium grained fertilizers	540	16	1,5		523	896	1279	1635	2027	2258	2624	2894	3169	3352	3686
			4		197	370	525	671	830	927	1062	1167	1281	1350	1495
			8		118	192	265	340	422	469	537	590	652	684	753
			12		82	127	183	223	284	321	365	398	449	465	512
			16		60	92	130	174	212	232	276	300	331	350	382
Fine grained fertilizers	540	12	1,5	198	324	550	926	1195	1507	1766	2125	2392	2743	2980	3317
			4	95	137	229	382	494	619	727	866	971	1122	1217	1332
			8	52	68	121	200	252	315	364	445	496	561	608	677
			12	33	46	105	137	172	217	248	296	334	382	415	454
			16	19	34	59	98	128	154	189	224	263	288	317	335
Medium cristal fertilizers	540	8	1,5	375	620	1144	1855	2294	2940	3436	4094	4583	5086	5577	6144
			4	131	249	468	751	927	1197	1387	1643	1842	2047	2242	2470
			8	77	127	237	374	473	607	698	829	933	1031	1124	1241
			12	50	86	159	253	318	414	472	557	621	689	755	827
			16	34	61	114	194	236	312	361	413	464	517	564	624
Calcium cyanamide and similar	540	10	1,5	312	852	1255	1859	2295	2095	3259	3801	4874			
			4	124	341	515	752	919	1129	1316	1526	1714			
			8	66	169	260	337	462	562	664	764	858			
			12	42	113	168	248	309	378	441	510	571			
			16	29	83	127	189	232	285	328	382	427			
Ammonium sulphate (Cr)	540	10	1,5	161	642	1050	1581	2022	2499	2963	3478	3812	4281	4590	5138
			4	69	254	424	633	814	1007	1182	1395	1531	1718	1842	2057
			8	32	130	214	319	411	504	590	699	762	860	919	1033
			12	26	83	139	215	274	335	396	475	513	577	618	690
			16	17	66	107	162	204	252	298	350	382	429	466	515
Thomas meal	400	6	1,5					2571	5724	7580	7874				
			6					650	1451	1915	1973				
	500		12					330	610	658	988				
			19					222	485	337	662				

In order to make the reference to the spreading table as clear as possible, we have listed only a few FERTILIZERS that differ in composition, quality, shape and specific weight. We remind you that the above indicated data are intended for reference only and are not binding. The data of the spreading table were obtained with the P.T.O. at 500 revolutions per minute and with the spreading disc at a height of 70/80 cm from ground. The tractor may run at a different speed from what indicated in the spreading table: we remind you that by increasing or reducing the speed, the quantity of FERTILIZER to be spread per hectare is accordingly increased or reduced.

SEEDS SPREADING TABLE

SEED	PTO	Spreading width (m)	FEED	Forward speed in km/h				
				1,5	2	2,5	3	3,5
WHEAT	500	16	2	306	122	61	40	29
			2,5	495	197	98	65	48
			3	677	270	135	89	67
			3,5	830	354	177	118	88
OAT	500	8	1,5	235	92	46	30	22
			2	389	155	77	51	38
			2,5	580	231	115	77	56
			3	777	310	154	103	77
RYE	500	16	2	395	156	81	51	39
			2,5	615	242	122	82	62
			3	843	336	167	111	86
			3,5	1025	410	205	136	102
BARLEY	500	12	2,5	405	161	80	52	40
			3	492	197	97	64	49
			3,5	680	273	135	91	66
			4	837	334	166	110	82
RYE GRASS	500	5	1,5	56	22	12	8	6
			2	159	64	33	22	16
			2,5	335	134	68	45	34
RAPE SEED	500	6,5	1,5	43	18	9	7	4
			2	240	96	47	32	24
			2,5	478	192	96	64	47
RED CLOVER	500	6,5	1,5	64	25	12	8	7
			2	220	88	44	29	23
			2,5	539	217	108	73	54

kg/ha of fertilizer to be spread at the speed indicated in column km/h

In order to make the reference to the spreading table as clear as possible, we have listed only a few SEEDS that differ in composition, quality, shape and specific weight. We remind you that the above indicated data are intended for reference only and are not binding. The data of the spreading table were obtained with the P.T.O. at 500 revolutions per minute and with the spreading disc at a height of 70/80 cm from ground. The tractor may run at a different speed from what indicated in the spreading table: we remind you that by increasing or reducing the speed, the quantity of SEEDS to be spread per hectare is accordingly increased or reduced.

ATTENTION !

THE USE
OF ORIGINAL PARTS TO
ENSURE THE CORRECT
FUNCTIONING
OF THE MACHINE.

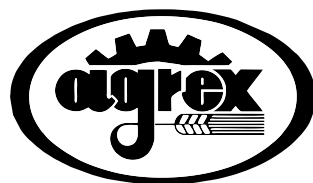
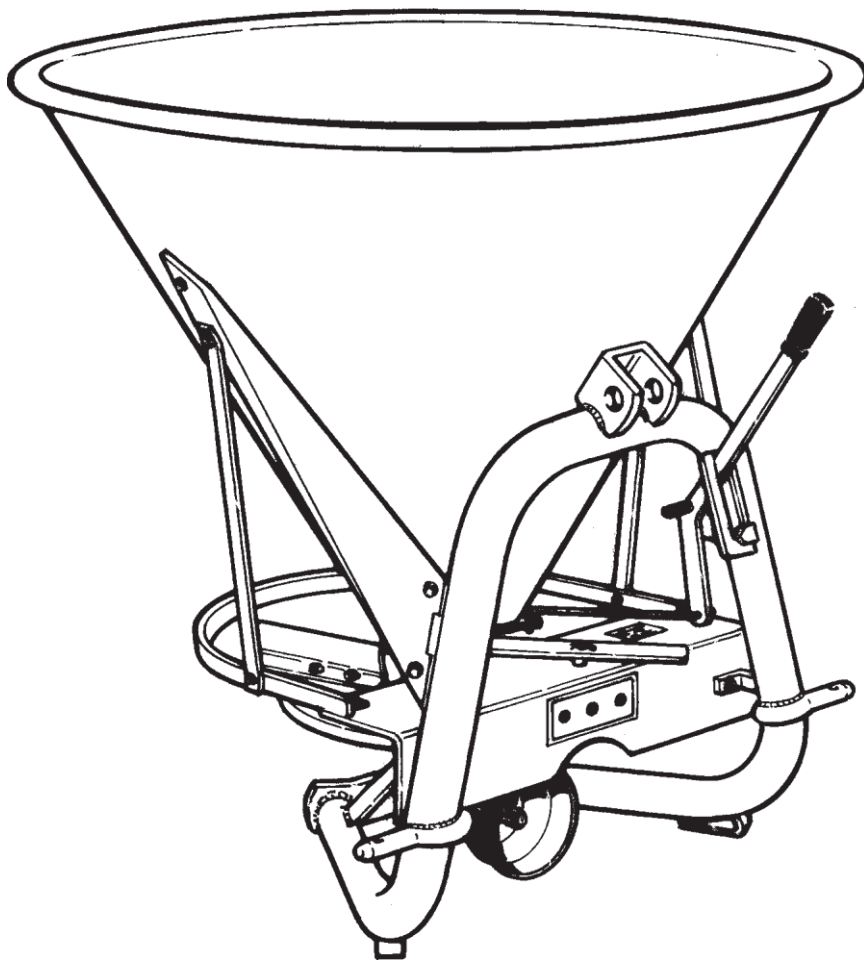


ATTENZIONE !

PER UN CORRETTO
FUNZIONAMENTO DELLE
NOSTRE MACCHINE USARE
ESCLUSIVAMENTE RICAMBI
ORIGINALI

22

**3-Point Linkage
Fertilizer Spreader**



**Spare Parts &
Optional Accessories**

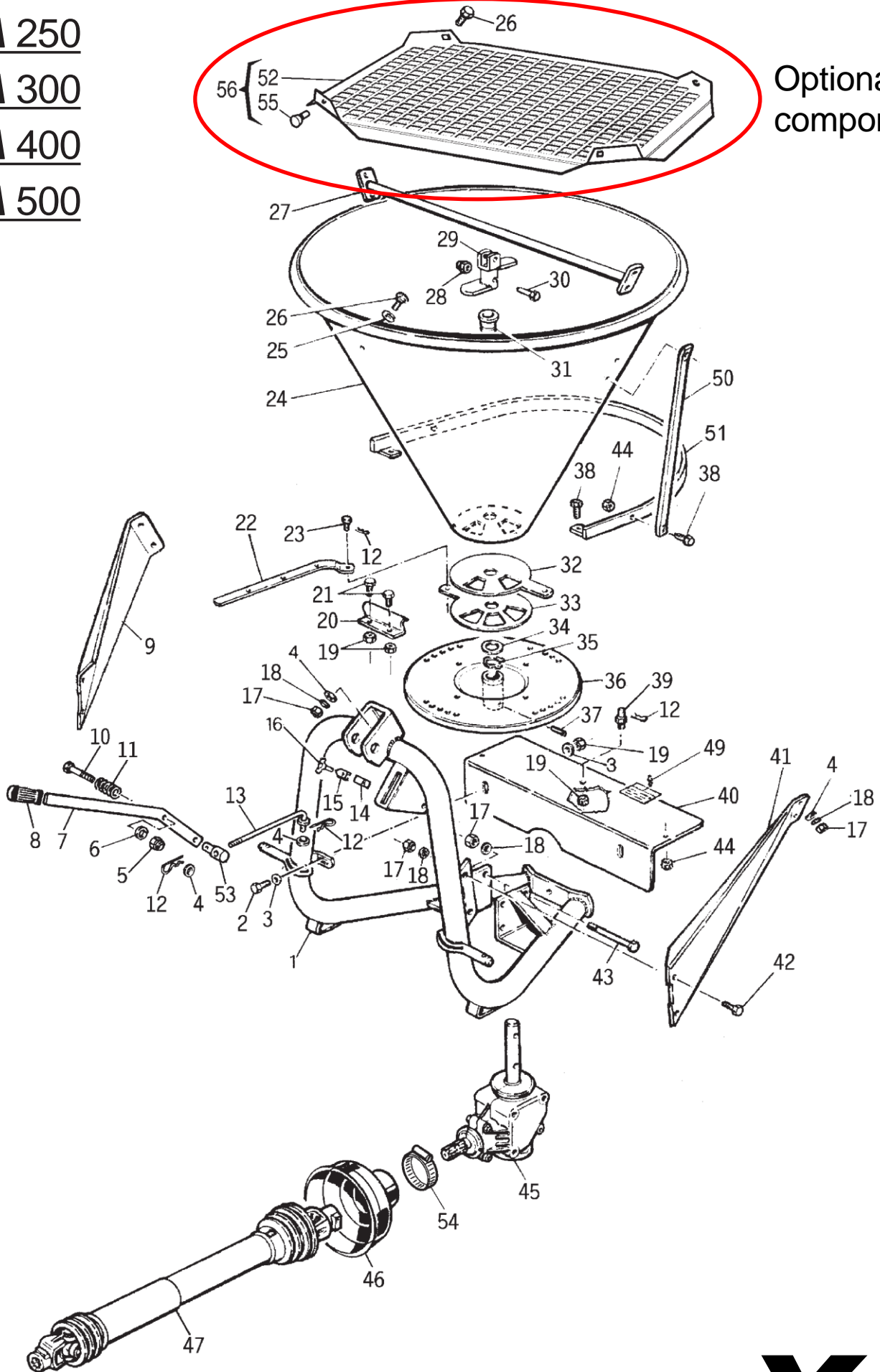
XA 150

XA 250

XA 300

XA 400

XA 500



Optional component



XA-XL
Fertilizer spreader
Spare parts

SERIES XA

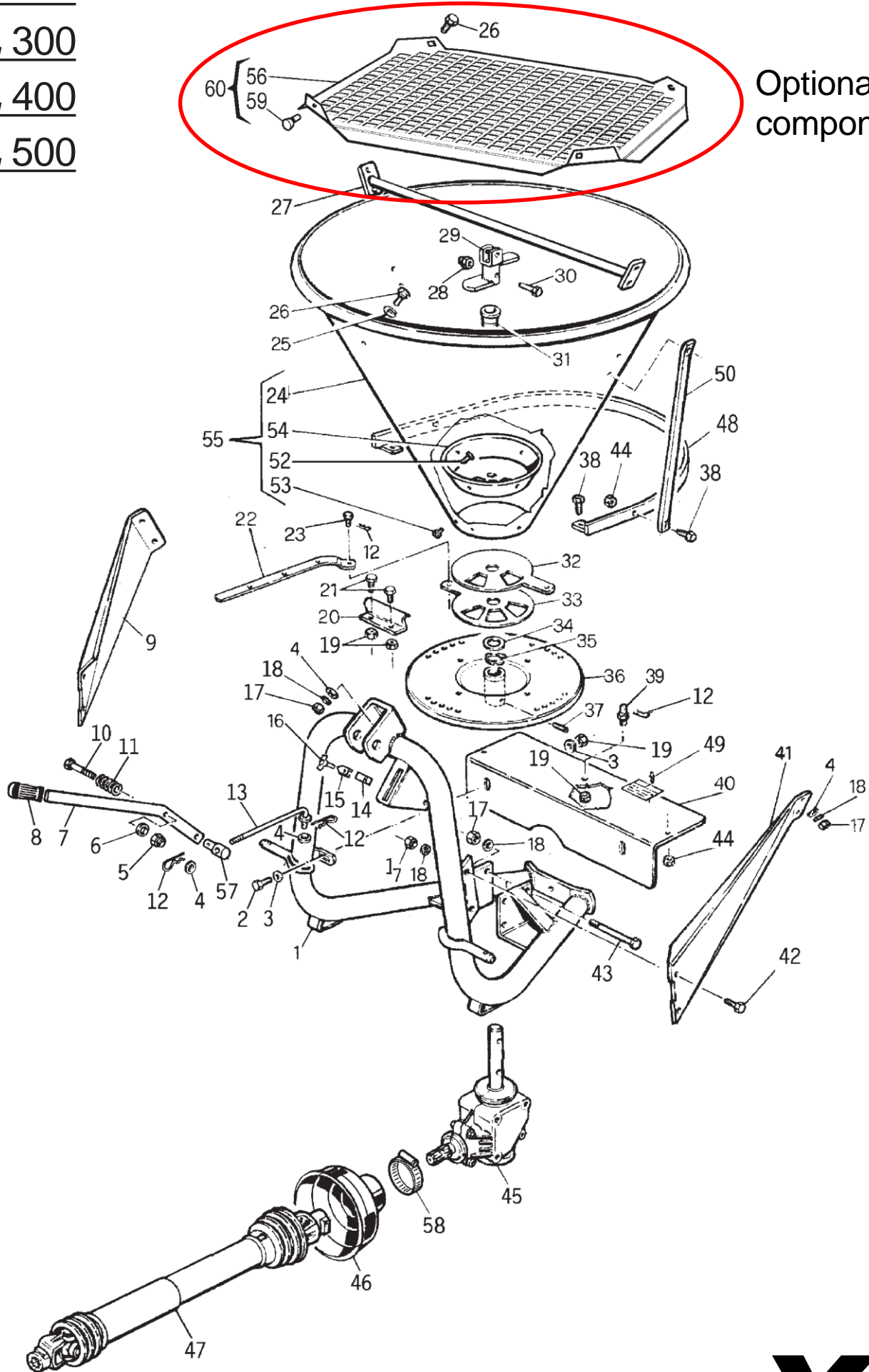
REF.	CODE	Q.TY	DESCRIPTION	DESCRIZIONE
1	XA251100	1	FRAME XA-XL	TELAIO XA-XL
2	52390820	2	GALVANIZED SCREW M8X20	VITE TEIF 8.8 ZN M8X20 DIN 933
3	659208ZN	4	GALVANIZED PLAIN WASHER M8	RONDELLA PIANA ZN M8 DIN 125/A
4	659210ZN	7	GALVANIZED PLAIN WASHER M10	RONDELLA PIANA ZN M10 DIN 125/A
5	747310ZN	1	GALVANIZED SELFLOCKING HIGH NUT M10	DADO AUTOBL. ALTO ZN M10 DIN 982
6	PA251027	1	BAKELITE WASHER	DISCHETTO BACHELITE
7	XA251010	1	ADJUSTMENT LEVER	LEVAAPERTURA CONCIME
8	IMGO0820	1	RUBBER HANDLE 8X20	IMPUGNATURA GOMMA 8X20
9	XA251008	1	SIDE SUPPORT RH	SUPPORTO LATERALE DX
10	50371065	1	CAP SCREW 4.8 ZN M10X65 DIN 931	VITE TEPF 4.8 ZN M10X65 DIN 931
11	PA251026	1	COMPRESSION-SPRING	MOLLA ACOMPRESSIONE
12	80100250	4	COTTER PIN A R D.2 L.50	SPINA A R D.2 L.50
13	XA251127	1	ADJUSTMENT BAR	ASTA DI REGOLAZIONE
14	PA251024	1	FIXING BLOCK	QUADRO DI FISSAGGIO
15	PA251025	1	INDICATOR	INDICATORE DI DISTRIBUZIONE
16	54490616	1	WING SCREW 6X16 DIN 316	VITE T-ALETTE 6X16 ZN DIN 316
17	558710ZN	12	HEX NUT PG ZN M10 UNI 5587	DADO ES. ALTO PG ZN M10 UNI 5587
18	679810ZN	12	GALVANIZED WASHER M10	RONDELLA D.E.V. ZN M10 DIN 6798
19	558708ZN	11	GALVANIZED HEXAGON HIGH NUT M8	DADO ES. ALTO PG ZN M8 UNI 5587
20	PA251023	4	VANE	PALETTA
21	52390816	8	GALVANIZED SCREW M8X16	VITE TEIF 8.8 ZN M8X16 DIN 933
22	XA251007	1	SELECTOR ROD RH-LH	ASTA REGOLAZIONE SPAGLIODX-SX
23	PA251014	1	CONNECTION PIN	PIOLINO DI COLLEGAMENTO
24	XA251021	1	STEEL HOPPER Ø=860	TRAMOGGIAACCIAIO Ø=860
24	XA251022	1	STEEL HOPPER Ø=955	TRAMOGGIAACCIAIO Ø=955
24	XA251023	1	STEEL HOPPER Ø=1035	TRAMOGGIAACCIAIO Ø=1035
24	XA251024	1	STEEL HOPPER Ø=1150	TRAMOGGIAACCIAIO Ø=1150
24	XA251026	1	STEEL HOPPER Ø=1100	TRAMOGGIAACCIAIO Ø=1100
25	PV251004	1	WASHER FOR HOPPER FIXING	RONDELLA FISSAGGIOTRAMOGGIA
26	57321025	5	CUPHEAD SCREW 10X25 ZN DIN 603	VITE T-TONDA 10X25 ZN DIN 603
27	XA251600	1	HOPPER REINFORCEMENT BAR	TUBO INTERNO TRAMOGGIA
28	747308ZN	1	GALVANIZED SELF-LOCKING HIGH NUT M8	DADO AUTOBLOCCANTE ALTO ZN M8
29	XA251002	1	AGITATOR XA	AGITATORE XA
30	52370845	1	BOLT 8.8 ZN M8X45 DIN 931	VITE TEPF 8.8 ZN M8X45 DIN 931
31	PA251016	1	AGITATOR BUSH GUIDE	BUSSOLA GUIDAAGITATORE
32	PA251018A	1	QUANTITY ADJUSTMENT DISC	DISCO FE DOSATURA 2 FORI
33	PA251019A	1	ADJUSTMENT DISC - 3 HOLES	DISCO FE REGOLAZIONE 3 FORI
34	PA251021	1	LOCK WASHER	RONDELLA TENUTADISCO
35	74353200	1	SNAP RING E D.32 DIN 471	ANELLO SEEGER E D.32
36	PA251010	1	SPREADING DISC	DISCO SPARGITORE
37	XA251044	1	PIN D.8 L.40	SPINA ELASTICA.D.8 L.40
38	57400620	4	GALVANIZED SCREW M6X20	VITE TE F/ROND. M6X20 ZN
39	XA251014	1	ADJUSTMENT PIN	PIOLINO DI REGOLAZIONE
40	XA251001	1	GUARD XA-XL	CARTER PROTEZIONE XA-XL
41	XA251009	1	SIDE SUPPORT LH	SUPPORTO LATERALE SX
42	52391025	4	GALVANIZED SCREW M10X25 DIN 933	VITE TEIF 8.8 ZN M10X25 DIN 933
43	50371011	3	SCREW TEPF 4.8 ZN M10X110	VITE TEPF 4.8 ZN M10X110
44	559006ZN	4	GALVANIZED HEXAGON NUT M6	DADO ES. C/RON. ZIG. M6-ZN
45	+XA251020	1	GEAR BOX FOR XA-XL-WA-SF-SL	GRUPPO TRASMISSIONE MOD.JF012-R.1:1
46	XA351003	1	PTO GUARD	CUFFIA DI PROTEZIONE GRUPPO NERA
47	C31700CE	1	CARDAN SHAFT 8X700 EC STANDARDS	ALB.CARDANO 8X700 - NORME CE
49	30018001	2	NICKEL-PLATED RIVET MF 33	RIVETTO NICHELATO MF.33
50	XA381001	2	UPPER SAFETY-DEVICE SUPPORT	SOSTEGNO PROTEZIONE SUPERIORE
51	XA361001	1	UPPER SAFETY-DEVICE	PROTEZIONE SUPERIORE
52	XA255300	1	PROTECTION GRID	GRIGLIA XA
53	XA251128	1	COUPLING	ATTACCO ASTA DI REGOLAZIONE
54	17305070	1	HOSE CLAMP Ø=50-70	FASCETTA NASTRO Ø=50-70
55	08.56.00	2	RUBBER DOWEL	PIOLO IN GOMMA BATTUTAGRIGLIA
56	XA255400	1	PROTECTION GRID + RUBBER DOWEL	GRIGLIA DI PROTEZIONE + PIOLI IN GOMMA

XL 250

XL 300

XL 400

XL 500



Optional
component



XA-XL
Fertilizer spreader
Spare parts

SERIES XL

REF.	CODE	Q.TY	DESCRIPTION	DESCRIZIONE
1	XA251100	1	FRAME XA-XL	TELAIO XA-XL
2	52390820	2	GALVANIZED SCREW M8X20	VITE TEIF 8.8 ZN M8X20 DIN 933
3	659208ZN	4	GALVANIZED PLAIN WASHER M8	RONDELLA PIANA ZN M8 DIN 125/A
4	659210ZN	7	GALVANIZED PLAIN WASHER M10	RONDELLA PIANA ZN M10 DIN 125/A
5	747310ZN	1	GALVANIZED SELFLOCKING HIGH NUT M10	DADO AUTOBL. ALTO ZN M10 DIN 982
6	PA251027	1	BAKELITE WASHER	DISCHETTO BACHELITE
7	XA251010	1	ADJUSTMENT LEVER	LEVAAPERTURA CONCIME
8	IMGO0820	1	RUBBER HANDLE 8X20	IMPUGNATURA GOMMA 8X20
9	XA251008	1	SIDE SUPPORT RH	SUPPORTO LATERALE DX
10	50371065	1	CAP SCREW 4.8 ZN M10X65 DIN 931	VITE TEPF 4.8 ZN M10X65 DIN 931
11	PA251026	1	COMPRESSION-SPRING	MOLLA ACOMPRESSIONE
12	80100250	4	COTTER PIN A R D.2 L.50	SPINA A R D.2L.50
13	XA251127	1	ADJUSTMENT BAR	ASTA DI REGOLAZIONE
14	PA251024	1	FIXING BLOCK	QUADRO DI FISSAGGIO
15	PA251025	1	INDICATOR	INDICATORE DI DISTRIBUZIONE
16	54490616	1	WING SCREW 6X16 DIN 316	VITE T-ALETTE 6X16 ZN DIN 316
17	558710ZN	12	HEX NUT PG ZN M10 UNI 5587	DADO ES. ALTO PG ZN M10 UNI 5587
18	679810ZN	12	GALVANIZED WASHER M10	RONDELLA D.E.V. ZN M10 DIN 6798
19	558708ZN	11	GALVANIZED HEXAGON HIGH NUT M8	DADO ES. ALTO PG ZN M8 UNI 5587
20	PA251023	4	VANE	PALETTA
21	52390816	8	GALVANIZED SCREW M8X16	VITE TEIF 8.8 ZN M8X16 DIN 933
22	XA251007	1	SELECTOR ROD RH-LH	ASTA REGOLAZIONE SPAGLIODX-SX
23	PA251014	1	CONNECTION PIN	PIOLINO DI COLLEGAMENTO
24	XL251001A	1	PLASTIC HOPPER Ø=955 H.662	TRAMOGGIA Ø=955 H.662
24	XL301001A	1	PLASTIC HOPPER Ø=1035 H.733	TRAMOGGIA Ø=1035 H.733
24	XL401001A	1	PLASTIC HOPPER Ø=1100 H.789	TRAMOGGIA Ø=1100 H.789
24	XL501001A	1	PLASTIC HOPPER Ø=1150 H.833	TRAMOGGIA Ø=1150 H.833
25	PV251004	1	WASHER FOR HOPPER FIXING	RONDELLA FISSAGGIOTRAMOGGIA
26	57321025	5	CUPHEAD SCREW 10X25 ZN DIN 603	VITE T-TONDA 10X25 ZN DIN 603
27	XA251600	1	HOPPER REINFORCEMENT BAR	TUBO INTERNO TRAMOGGIA
28	747308ZN	1	GALVANIZED SELF-LOCKING HIGH NUT M8	DADO AUTOBLOCCANTE ALTO ZN M8
29	PA251032	1	AGITATOR XL	AGITATORE XL
30	52370845	1	BOLT 8.8 ZN M8X45 DIN 931	VITE TEPF 8.8 ZN M8X45 DIN 931
31	PA251016	1	AGITATOR BUSH GUIDE	BUSSOLA GUIDAAGITATORE
32	PA251018	1	STAINLESS STEEL DOSING DISC (2 HOLES)	DISCO INOX DOSATURA 2 FORI
33	PA251019	1	ADJUSTMENT DISC - 3 HOLES	DISCO INOX REGOLAZIONE 3 FORI
34	PA251021	1	LOCK WASHER	RONDELLA TENUTADISCO
35	74353200	1	SNAP RING E D.32 DIN 471	ANELLO SEEGER E D.32
36	PA251010	1	SPREADING DISC	DISCO SPARGITORE
37	XA251044	1	PIN D.8 L.40	SPINA ELASTICA.D.8 L.40
38	57400620	4	GALVANIZED SCREW M6X20	VITE TE F/ROND. M6X20 ZN
39	XA251014	1	ADJUSTMENT PIN	PIOLINO DI REGOLAZIONE
40	XA251001	1	GUARD XA-XL	CARTER PROTEZIONE XA-XL
41	XA251009	1	SIDE SUPPORT LH	SUPPORTO LATERALE SX
42	52391025	4	GALVANIZED SCREW M10X25 DIN 933	VITE TEIF 8.8 ZN M10X25 DIN 933
43	50371011	3	SCREW TEPF 4.8 ZN M10X110	VITE TEPF 4.8 ZN M10X110
44	559006ZN	4	GALVANIZED HEXAGON NUT M6	DADO ES. C/RON. ZIG. M6-ZN
45	+XA251020	1	GEAR BOX FOR XA-XL-WA-SF-SL	GRUPPO TRASMISSIONE MOD.JF012-R.1:1
46	XA351003	1	PTO GUARD	CUFFIA DI PROTEZIONE GRUPPONERA
47	C31700CE	1	CARDAN SHAFT 8X700 EC STANDARDS	ALB.CARDANO 8X700 - NORME CE
48	XA361001	1	UPPER SAFETY-DEVICE	PROTEZIONE SUPERIORE
49	30018001	2	NICKEL-PLATED RIVET MF 33	RIVETTO NICHELATO MF.33
50	XA381001	2	UPPER SAFETY-DEVICE SUPPORT	SOSTEGNO PROTEZIONE SUPERIORE
52	XL251004	6	NUT MA 6X11 TE.17	DADO MA 6X11 TE.17
53	XL251003	6	SCREW MA 6X11 TE.17	VITE MA 6X11 TE.17
54	XL251002	1	STAINLESS STEEL BOTTOMXL	FONDO INOX TRAMOGGIA XL
55	XL251000	1	250 HOPPER C/W BOTTOM	TRAMOGGIA 250 CON FONDO INOX
55	XL301000	1	300 HOPPER C/W BOTTOM	TRAMOGGIA 300 CON FONDO INOX
55	XL401000	1	400 HOPPER C/W BOTTOM	TRAMOGGIA 400 CON FONDO INOX
55	XL501000	1	500 HOPPER C/W BOTTOM	TRAMOGGIA 500 CON FONDO INOX
56	XA255300	1	PROTECTION GRID	GRIGLIA DI PROTEZIONE

ATTENTION !

THE USE
OF ORIGINAL PARTS TO
ENSURE THE CORRECT
FUNCTIONING
OF THE MACHINE.



ATTENZIONE !

PER UN CORRETTO
FUNZIONAMENTO DELLE
NOSTRE MACCHINE USARE
ESCLUSIVAMENTE RICAMBI
ORIGINALI



ARTICULATED AGITATOR

AGITATORE ARTICOLATO

XA 150

XA 250

XA 300

XA 400

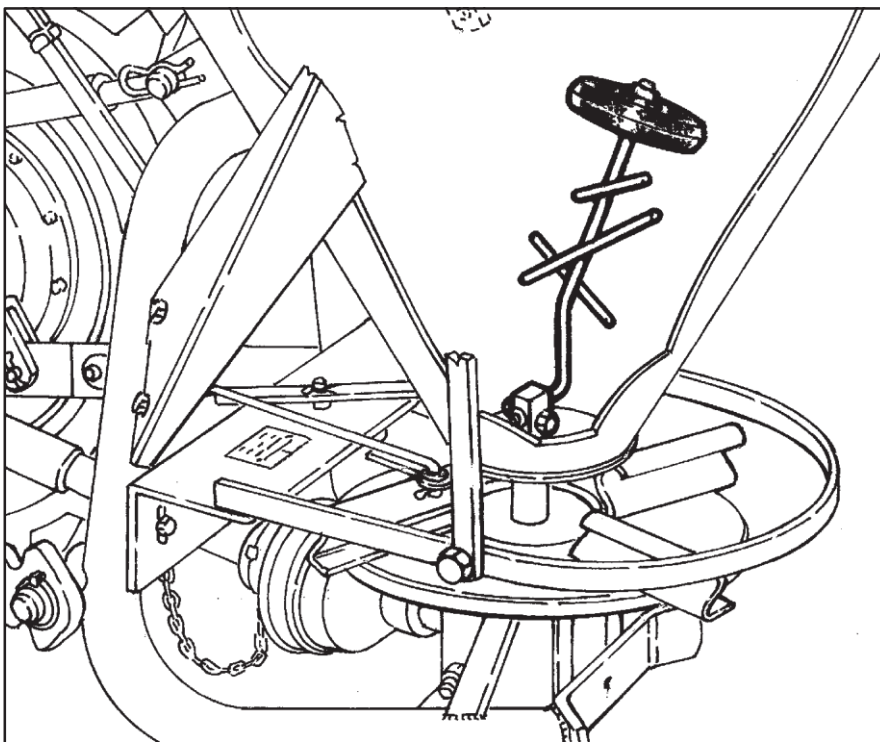
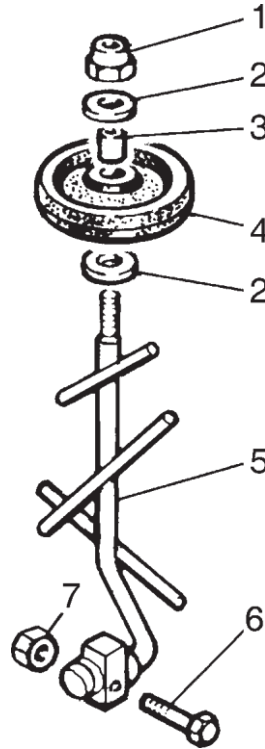
XA 500

XL 250

XL 300

XL 400

XL 500



SERIES

XA

XL

XA-XL
Fertilizer spreader
Spare parts

DEFLECTOR FOR SALT/SAND

DEFLETTORE SPARGI SALE/SABBIA

XA 150

XA 250

XA 300

XA 400

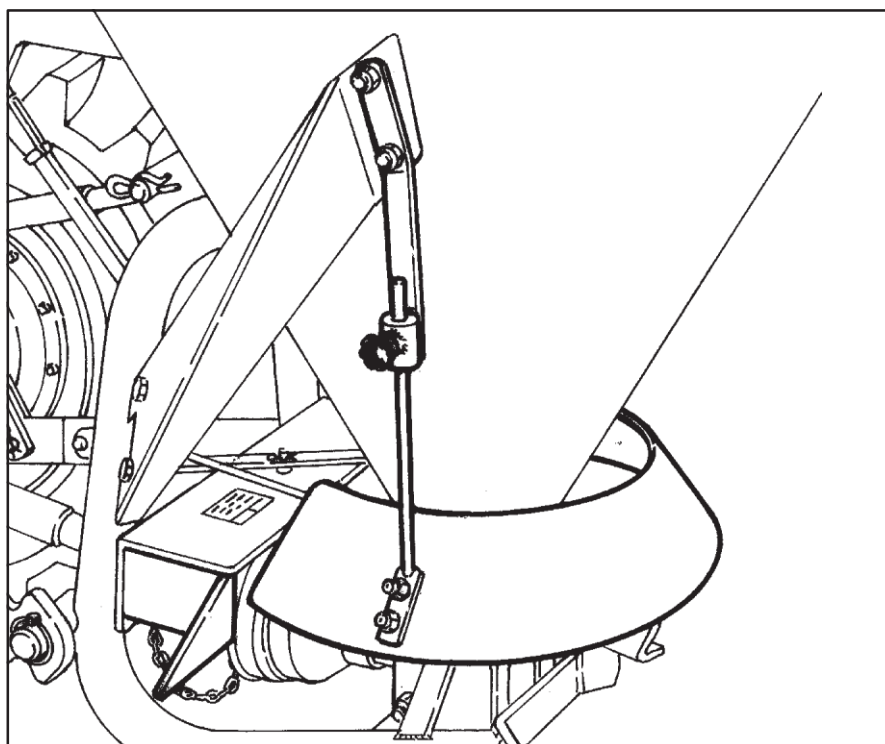
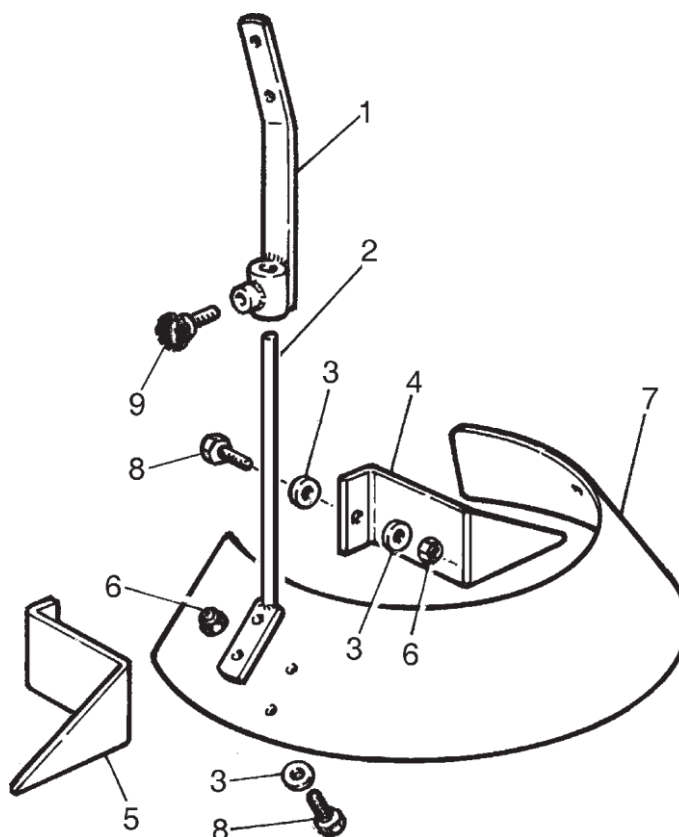
XA 500

XL 250

XL 300

XL 400

XL 500



SERIES

XA

XL

XA-XL
Fertilizer spreader
Spare parts

FERTILIZER CONVEYOR

CONVOGLIATORE

XA 150

XA 250

XA 300

XA 400

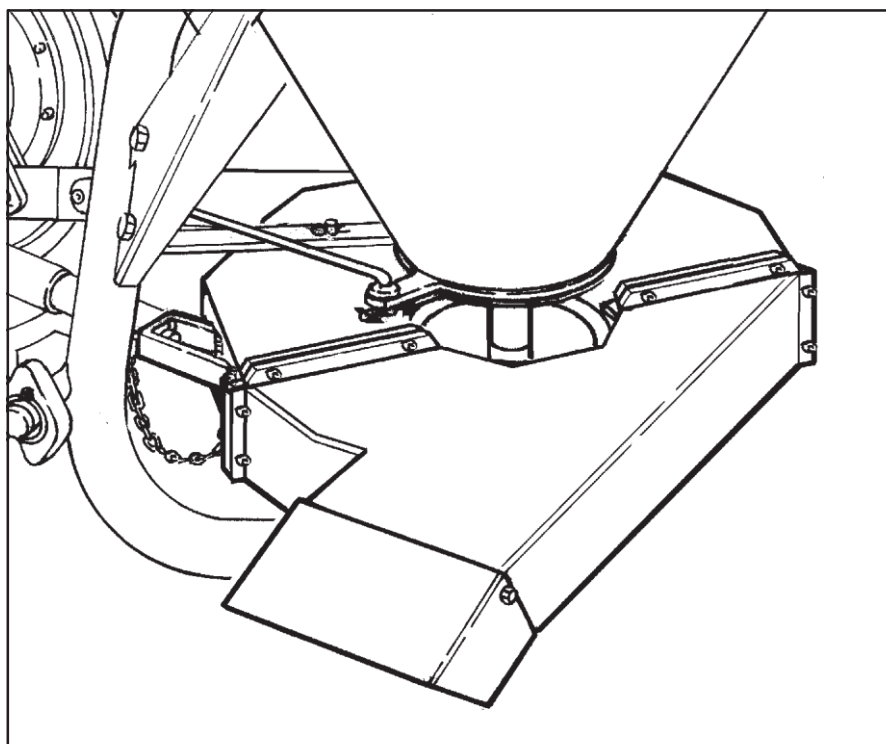
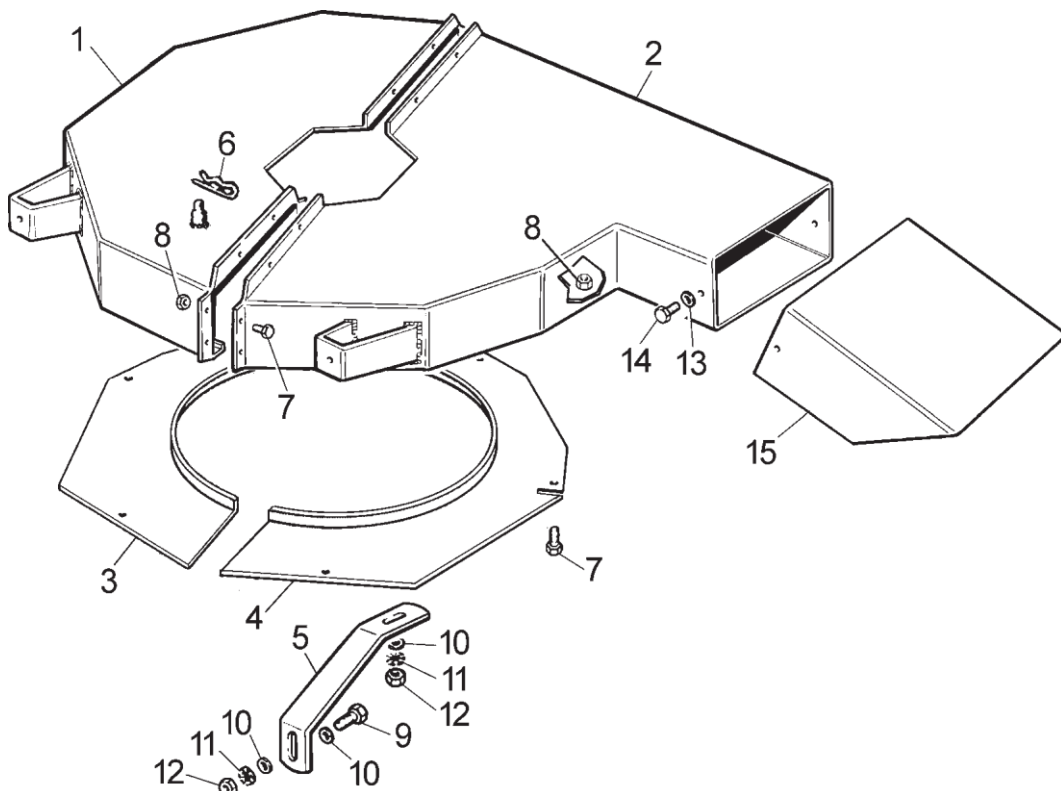
XA 500

XL 250

XL 300

XL 400

XL 500



SERIES

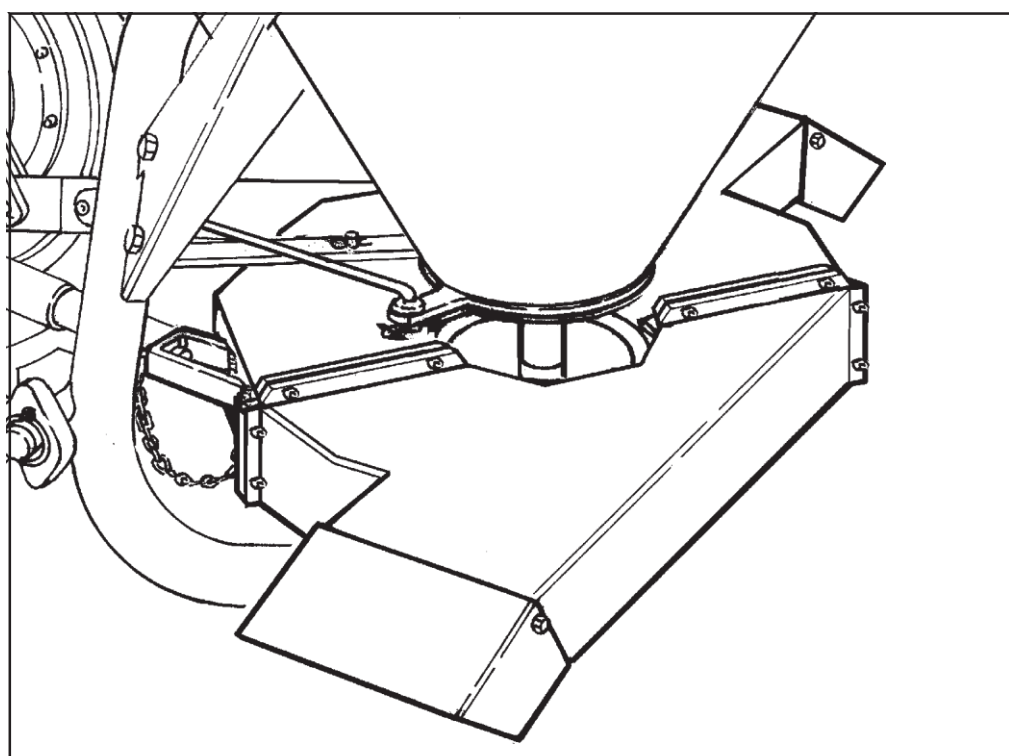
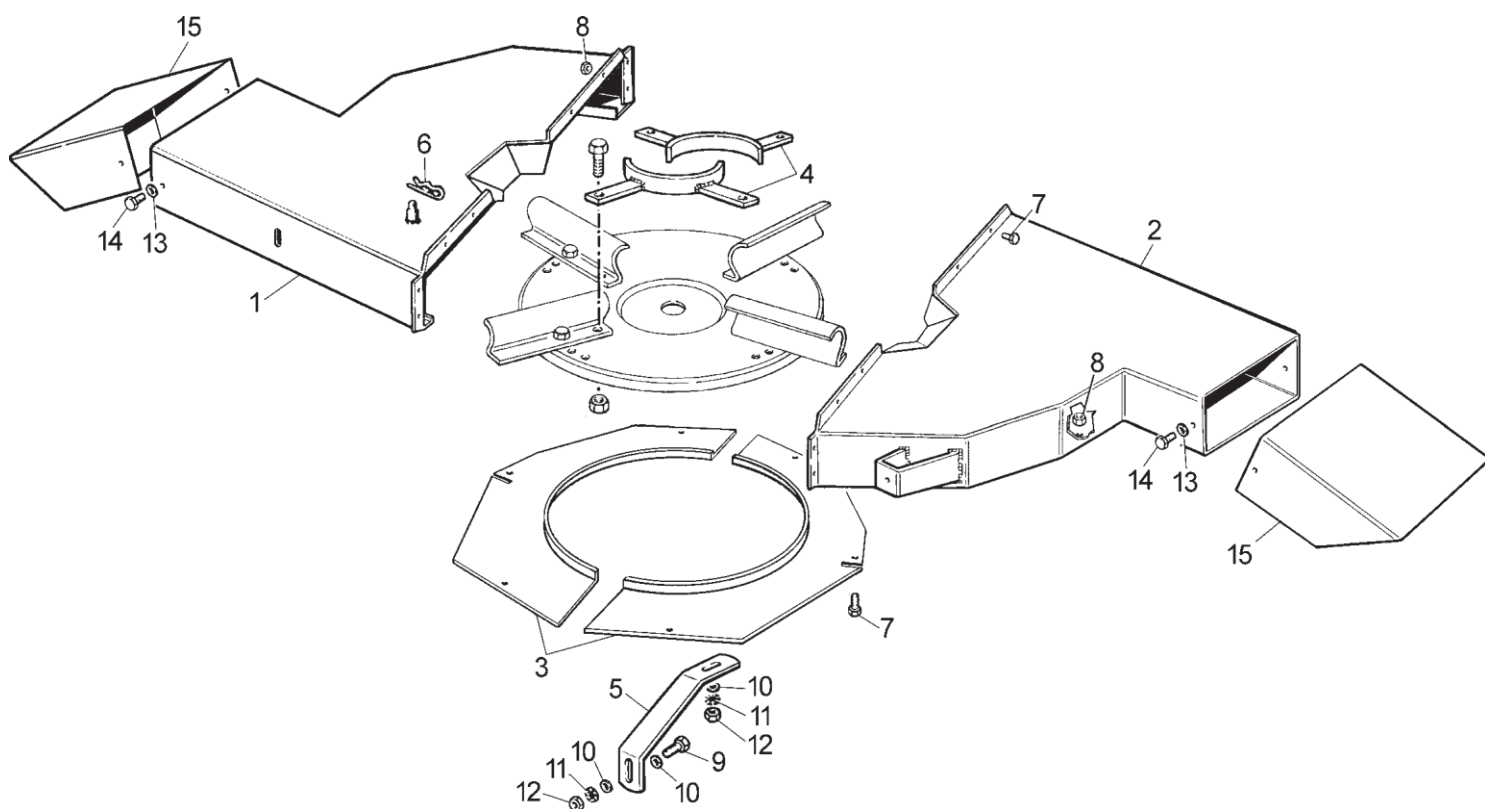
XA

XL

XA-XL
Fertilizer spreader
Spare parts

DUAL FERTILIZER CONVEYOR

CONVOGLIATORE DOPPIO



XA 150

XA 250

XA 300

XA 400

XA 500

XL 250

XL 300

XL 400

XL 500

XA-XL

Fertilizer spreader

Spare parts

MECHANIC REMOTE CONTROL

COMANDO MECCANICO ADISTANZA

XA 150

XA 250

XA 300

XA 400

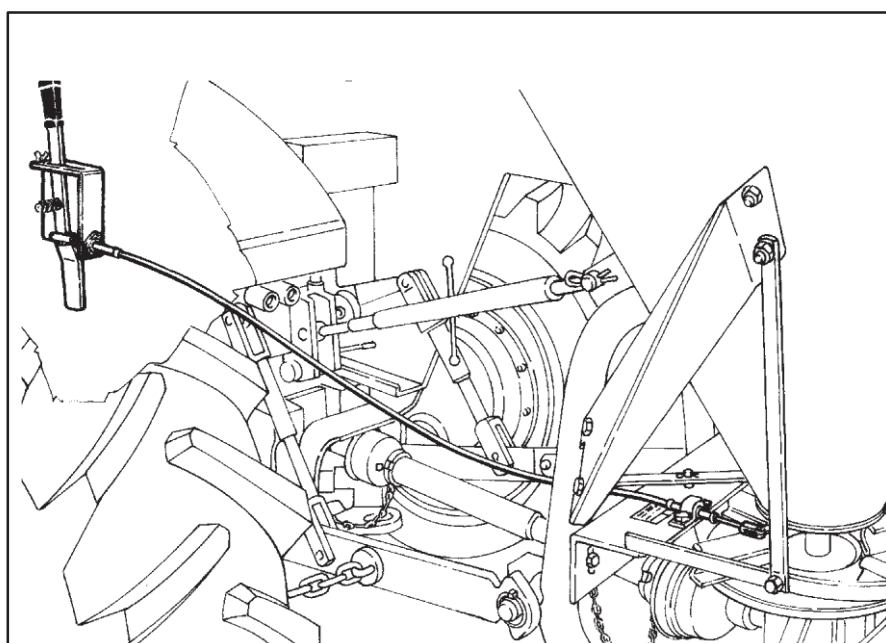
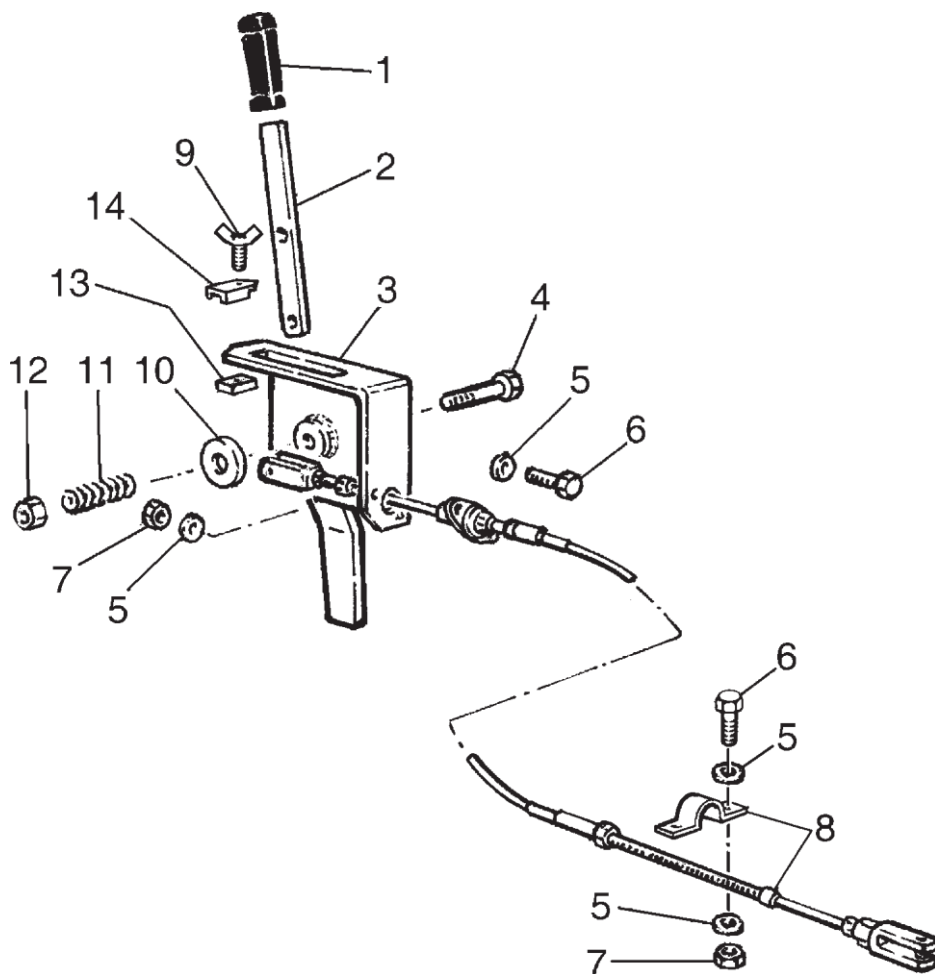
XA 500

XL 250

XL 300

XL 400

XL 500



SERIES

XA

XL

XA-XL
Fertilizer spreader
Spare parts

STAINLESS STEEL SPREADING DISC

DISCO SPARGITORE IN INOX

XA 150

XA 250

XA 300

XA 400

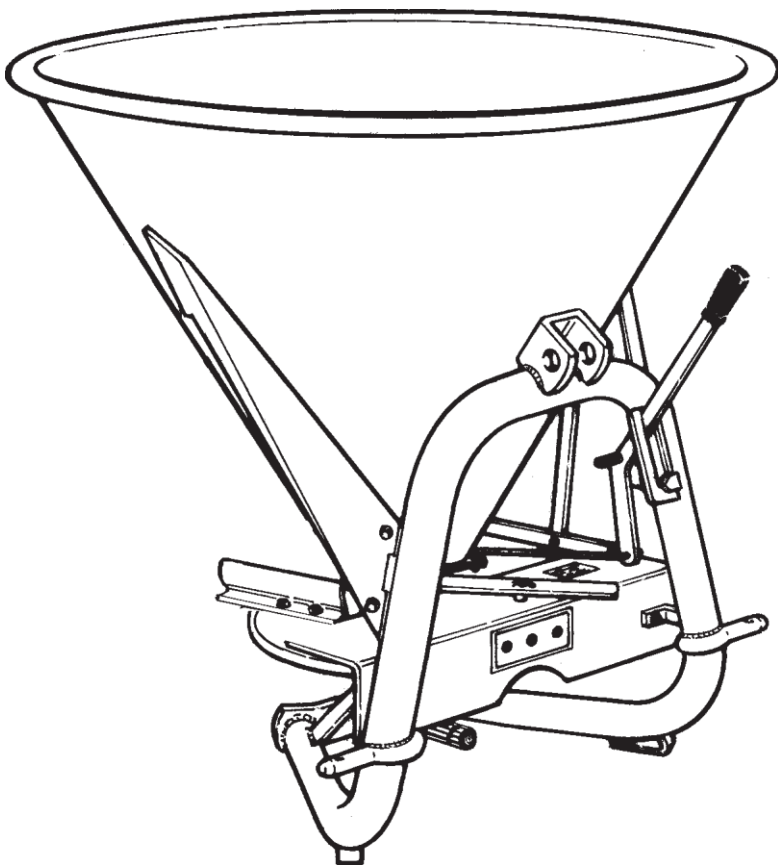
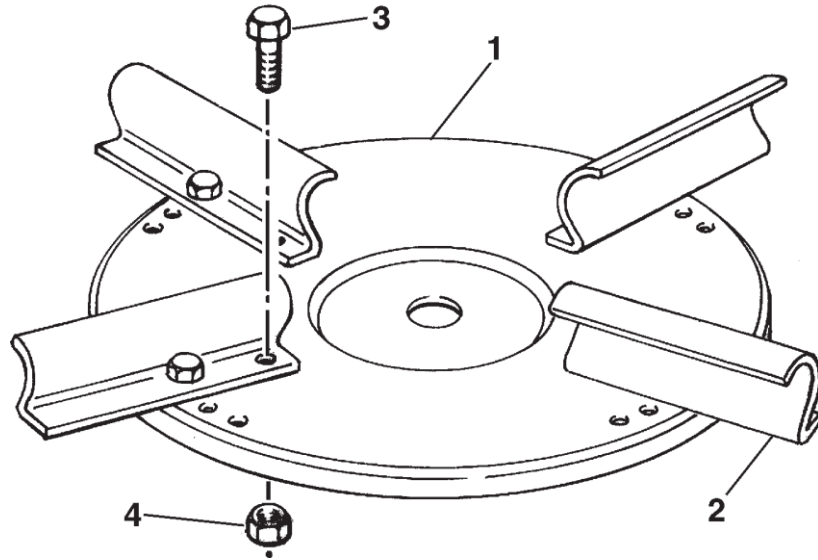
XA 500

XL 250

XL 300

XL 400

XL 500



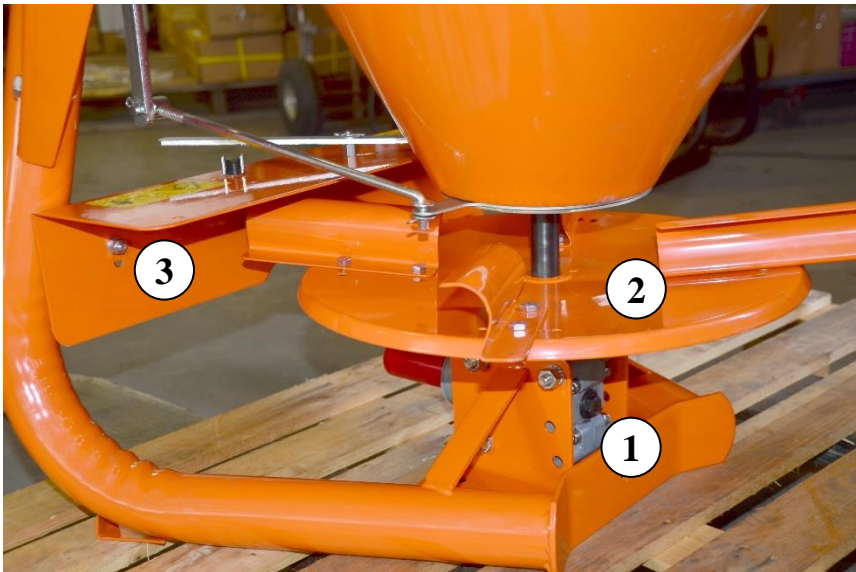
SERIES

XA

XL

XA-XL
Fertilizer spreader
Spare parts

ASSEMBLY GUIDE

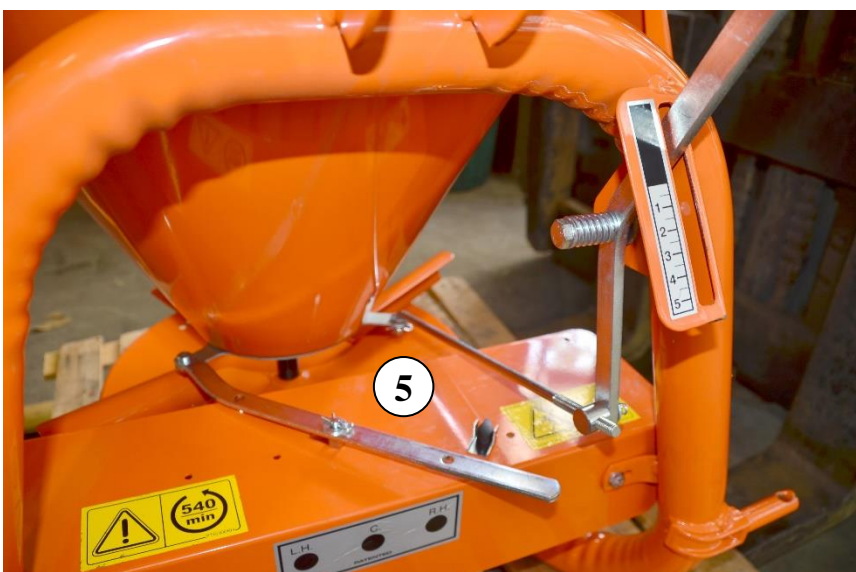


Assembly Sequence

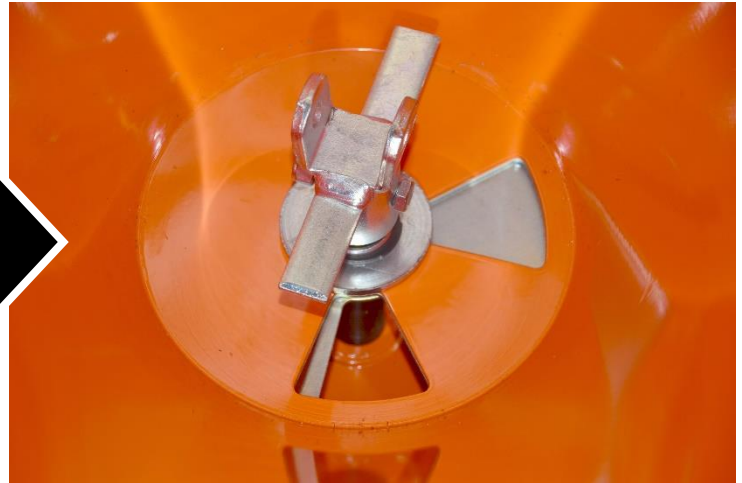
1. Install the gearbox ① to the frame.
2. Install the spinner on the gearbox upright spindle ②.
3. Install the cross-member on the back of the frame ③.
4. Attach the hopper gates ④ with the tabs facing in opposite directions.
5. Attach the control handles ⑤ as shown.
6. Install left and right hopper supports.
7. Install hopper on frame using supplied bolts, remember to install internal brace rail inside hopper, this shares the same bolts.



8. **Ensure all nuts and bolts are tight before use.**
9. **Fill gearbox with gear oil before use.**



ASSEMBLY GUIDE



Direction shutter set to disperse material to the right hand side



Direction shutter set to disperse material to both sides



Direction shutter set to disperse material to the left hand side