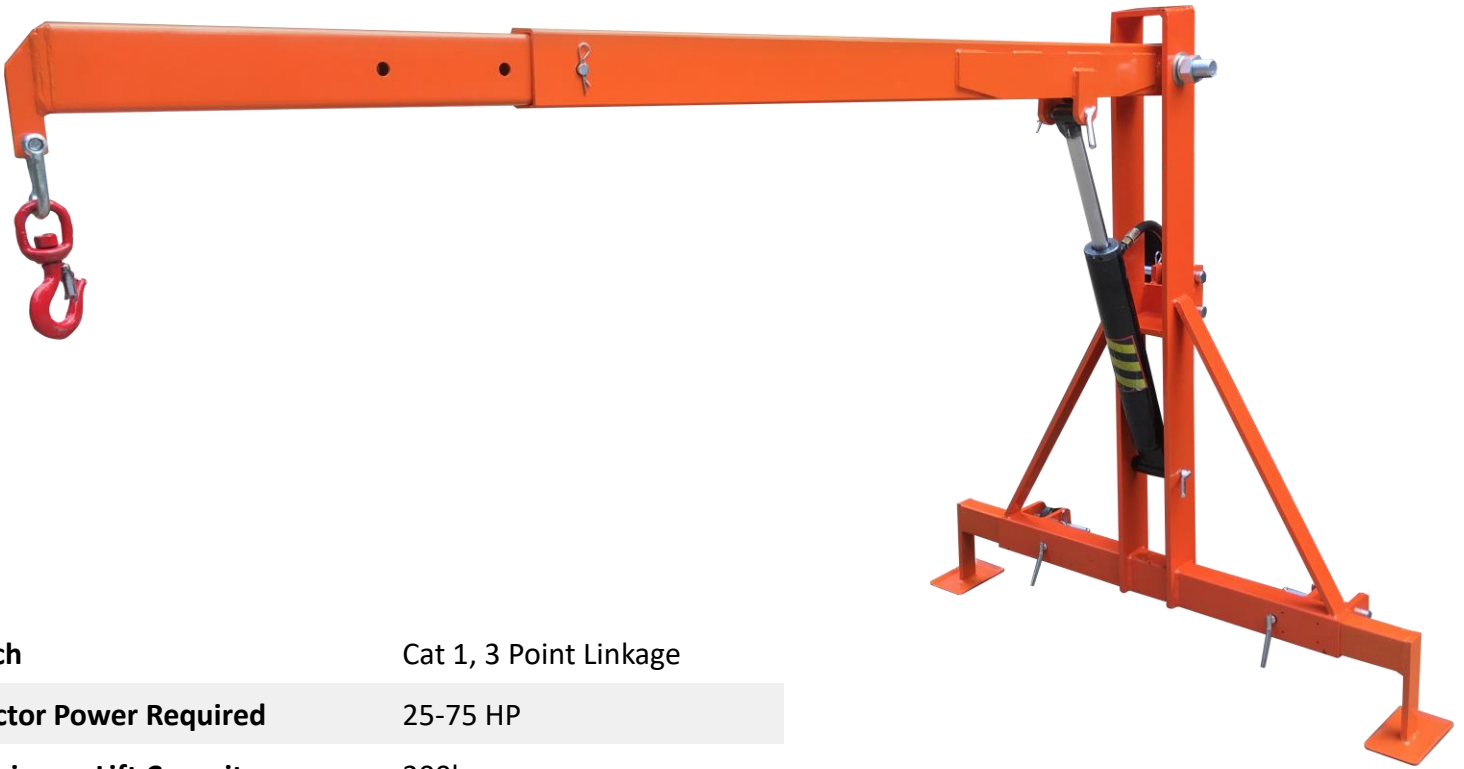




3-Point Hydraulic Boom Lift (200kg)

The 3-Point Boom Lift has a robust and durable steel construction. Ideal for hydraulically operated lifting at the rear of the tractor. The lift arm can be extended in three steps (with progressively lower capacity as the arm extends). Simple to use and can be easily stored when not in use. Lateral reinforcement to withstand heavy loading. The clamp hook tip provides extra security while the adjustable support feet offer more stability.



Hitch	Cat 1, 3 Point Linkage
Tractor Power Required	25-75 HP
Maximum Lift Capacity	200kg
Lifting Method	Hydraulic
Hydraulic Power Source	Tractor Remotes
Hydraulic Flow Rate	18-22l/min
Boom Adjustments	3
Retracted Boom Length	1,510mm
Extended Boom Length	2,150mm
Maximum Lift Height	2,200mm + tractor lift
Operating Pressure	1,100 - 1,750 PSI
Unit Mass	80kg Approx.

 Some Assembly Required

 Category #1 3 Point Linkage

Your Price



Inc. GST



- Chat to Normal, Friendly Folk
- 100% Australian Family Owned
- Factory Direct Products
- Readily Available Spare Parts
- Reliable After Sales Service

 www.DiscountImplements.com

 **(02) 6553 6393**

 **The Lakes Way, Rainbow Flat, NSW 2430**